

MySoft ERP

Technologies and Solutions For
INDUSTRIAL 4.0



MySoft[®]

CONTENT OF TABLE

ABOUT MYSOFT ERP	01
WHAT IS ERP	02
MYSOFT ERP SYSTEM	03
OUR KEY DIFFERENTIATOR	04
YOUR BUSINESS BENEFITS	05
MYSOFT ERP FUNCTIONALITY OVERVIEW	07
PURCHASE MANAGEMENT	09
SALES & BILLING MANAGEMENT	11
CUSTOMER MANAGEMENT	13
SUPPLIER MANAGEMENT	15
STOCK MANAGEMENT	17
FINANCE & ACCOUNTING	19
FINANCIAL REPORTING	21
MYSOFT ERP FLEXIBLE DEPLOYMENT OPTIONS	23
MYSOFT ERP ON-PREMISE SOLUTION	23
MYSOFT ERP INTERCOMPANY INTEGRATION SOLUTION	24

MYSOFT ERP ADD-ON MODULES _____	25
OPTIONAL ADD-ON _____	25
SALES PROMOTION _____	26
VEHICLE MANAGEMENT _____	27
PROJECT MANAGEMENT _____	28
EMAIL SETTINGS _____	29
SALESMAN COMMISSION _____	30
OVERDUE INTEREST _____	31
CONSOLE AGEING _____	32
SST MODULE STATUTORY COMPLIANCE _____	33
SST MODULE _____	34
EXPORT REPORT IN VARIETIES FORMATS _____	35
MOBLITY SOLUTION _____	36
MYSOFT ERP PROCESS FLOW CHART _____	37
OUR CUSTOMER'S INDUSTRY _____	38
OUR CUSTOMER'S REFERENCE _____	39
MYSOFT ERP FEATURE LIST _____	41



ABOUT MYSOFT ERP

Simplifying Your Success

MySoft ERP has been in leading-edge ERP technology for more than 14 years and providing growing business and large business with one flexible and easy-to-use solution. MySoft ERP provides you visibility and operational standardization solution to assist you to run a business more efficiently and profitably through a range of comprehensive business tools. MySoft ERP takes pride in the fact that we are a technology partner to our customers, without losing sight of the importance of the personal relationship.

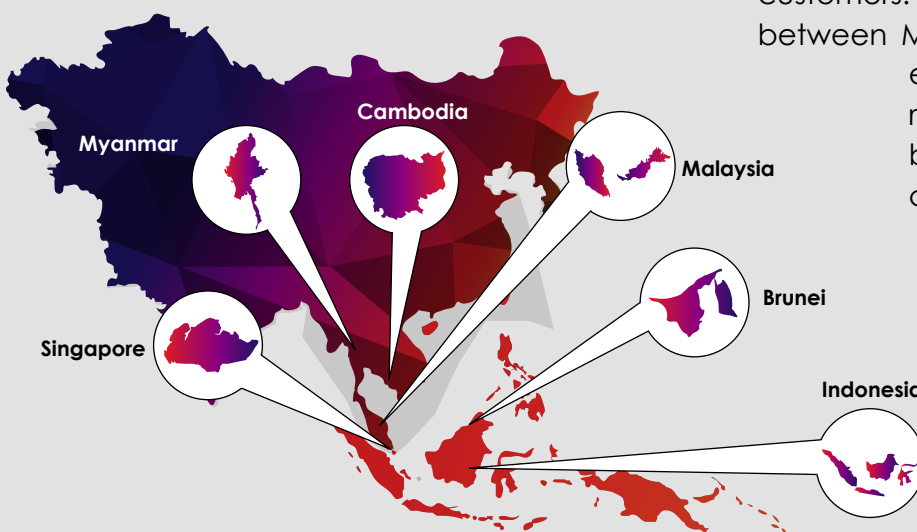
Today, MySoft ERP is a recognized ERP supplier with hundreds of customers in ASEAN countries. MySoft ERP has also been recognized by the Royal Malaysian Customs Department (RMCD) and Inland Revenue Authority of Singapore (IRAS) as a qualified yet powerful system to handle complex and confusing SST system smoothly.

MySoft ERP built-in a broad range of powerful features base of manufacturing, distribution and accounting functionality, simplicity of use, operational visibility, strong analytic and reporting capabilities, exceptional business process modeling and work-flow management. MySoft ERP remains an industry leader by listening to the needs of customers, anticipating industry and technology trends, continuously evolving the system's functionalities based upon these needs and trends.

STRENGTH THROUGH PARTNERSHIP

MySoft ERP For Asean User

MySoft ERP is delivered to the market through our strong channel partner network that is responsible for local implementation and supports. We are emphasized on our channel partner's development and achievement, we strive to provide you with a high-quality ERP implementation and experience for all MySoft customers. Our distinctive collaboration between MySoft and its channel partners establish a rewarding and strong relationship with customers bringing you the confidence in choosing us.





MySoft ERP Delivering Unmatched Levels of ERP Solution

MySoft ERP is a continual-evolving & industry-specific ERP designed to simplify complexity & add significant value from retailer to manufacturers and distributors. MySoft ERP has redefined the business working process, it optimizing your operation and reducing cost yet increasing productivity and efficiency to help your business achieve higher profitability.

MySoft ERP integrated with the latest innovates technologies to bring you the powerful features to digitalize your business, streamline your supply chain and gains you greater control and visibility while simplifying and personalizing user experience.

MySoft believes every business is different, MySoft ERP is designed with the flexibility to choose the system deployment method that best suit your business requirements. Whether it's deployed on-premise or in the cloud, you can access MySoft ERP at any time and anywhere via any mobile device.

What Is ERP

Enterprise Resource Planning

ERP is mean Enterprise Resource Planning, but even its full name doesn't shed much light on what ERP is or what it does. For that, you need to take a step back and think about all of the various processes that are essential to running a business, including inventory and order management, accounting, human resources, customer relationship management (CRM), and beyond.

At its most basic level, ERP software ntegrates these various functions into one complete system to stream line processes and information across the entire organization.

The central feature of all ERP systems is a shared database that supports multiple functions used by different business units. In practice, this means that employees in different divisions—for example, accounting and sales—can rely on the same information for their specific needs.

MYSOFT ERP SYSTEM

Grow and manage your business effectively with MySoft ERP



An easy-to-use MySoft ERP system providing you the comprehensive business solutions in increasing your business profitability and business operation management efficiency. Business owners like you or managers and employees alike can process information more effectively, helping you and them to make sound business decisions quickly with trusted financial and accounting report supports.



Affordable
The low total cost of implement MySoft ERP



Various Industry Solutions
Tailored to your needs



Comprehensive Business Solutions
To handle all your departments need from one solution



Having Professional Partners Supports
Implemented in Asean countries



Quick And Easy To Implement
Up and running in days or weeks



SST Solutions Ready
Stay compliance with latest SST Tax Legislation



Powerful Enough
To help your business grow



Microsoft SQL Database
Excellent database security and Data Recovery

MYSOFT ERP KEY DIFFERENTIATOR

1

Personal Information Management

MySoft ERP provides you the personalize system for every user login with own screen view, security, reports, default settings, access own customers, products and etc. You can also set your own screen mode either Task List Mode or Icon Mode.

5

Modular Add-ons

MySoft ERP is designed to be modular-basis. You may choose what features you needed upfront, and then upgrade your software or adding more modules as your business growing in the future without changing the software.

2

Powerful Reporting Tools and Analysis

MySoft ERP is a fully integrated with Crystal Reports software which breaks down any items in a report to see all the relevant details. Besides that, it is also fully integrated with Microsoft Excel whereby users can export a report in excel format, filter data and prepare data chart presentation.

6

Advance Integration With Hybrid Cloud

MySoft ERP provides a flexible business platform that integrates your customers, suppliers, parent companies and mobile devices. MySoft ERP Integration Technology connects every aspect of your business to achieve better business operation management control.

3

Design Architecture

Program, Database and Reports as three separate entities. Provide you the flexibility and robust database administration in the system.

7

Powerful System Global Settings

Many advance settings according to your company preferences. For example, you can run perpetual or periodical accounting according to stock item type.

4

Multiple Voucher Management

User can define Multiple Voucher for every tasks and functions and print out own customize Multiple Voucher layout. All voucher can link to own department and users. It Improves the tracability, business operation control and branch management.

8

Designed By Malaysian For Malaysia SMEs

The advantages of local system are designed following the local SOP, Tax System, report & voucher format and easy system customization and communication with local developer.

YOUR BUSINESS BENEFITS

Increase revenue

Fully manage all your business activities and access to real-time information to help you identify new sales opportunities and reduce the customers outstanding balance by sending e-statement reminder.

Reduce costs

Upgrade your software doesn't mean you have to switch to another software and migrate your database. With MySoft ERP, you can upgrade your software easily by adding more functions into it without software customization needed.

Easy integration

MySoft ERP is fully integrated with Microsoft Excel and Crystal Report Software and 3rd Party Software intergration available with MySoft ERP.



Real-time business information

Access to timely and accurate real-time business information with MySoft ERP to assist you in making sound business decision making quickly and putting you firmly in control of your business.

Improve business operation efficiency

One centralized data repository to increase your business operation efficiency and eliminating redundant data entry. Reliable relationship management system software to increase your communication with customer and supplier effectively.

Industry-ready templates

MySoft ERP has ready-made templates designed for multiple industries.

- Fast software system implementation process without needing customization.
- Support report customization to fit your company needs.

MYSOFT ERP FUNCTIONALITY OVERVIEW

The most comprehensive and versatile business management solutions with an easy-to-use interface to manage your business effectively.

Accelerate Core Purchase Processes

Manage your order process cycle from purchase quotes and orders to goods received, to calculating landed costs for imports, to warranty management and credits and to managing accounts payable in MySoft ERP.

Manage Your Suppliers

Manage your supplier information with MySoft ERP, record your supplier latest contact summaries, account balance, keep track of your orders, delivery, and goods receipt status.

Optimize Your Inventory

MySoft ERP inventory management provides you the information on your current inventory level to prevent shortages or excess. Ensure inventory is at an optimal level and reduce space occupied at your warehouse



Company Chart of Accounts

Easily manage your accounts through provided Chart of Accounts. Handle financial transactions including general ledger, account set up and maintenance and journal entries with MySoft ERP.

Simplify Order To Payment Process

MySoft ERP makes your customer quotation and orders creation, set up deliveries, update stock balances, and manage all invoice and accounts receivables easily and effectively.

Satisfy Your Customers

Manage your customers' information with MySoft ERP, records your customers latest profile details, contact summaries, account balances and their recent business transactions with your company to assists you in identifying their product preference easily.

Track Inventory Movement History

View the full history of all your inventory movements records and track down any problems and achieve fully inventory cycle control for your organization with MySoft ERP.

Stay SST Compliant

MySoft stays in line with Malaysia Tax Laws and Regulation with MySoft ERP to avoid penalties and handling your SST Tax transactions confidently.

Accurate Financial Reporting

Fast and accurate financial reports generate to assist you in making fast and sound business decisions quickly and increase your business profitability with MySoft ERP.

PURCHASE MANAGEMENT

Handling your entire procurement process from orders to receipt and supplier payment easily with MySoft ERP.

MODULES INVOLVED

SUPPLIER MODULE

- Purchase Entry/Journal ●
- Purchase Entry With Stock ●
- Supplier Payment ●
- Supplier Refund ●
- Batch Matching ●

PURCHASE ORDER MODULE

- Purchase Order ●
- Goods Receive ●
- Purchase Invoice ●
- Goods Return ●
- Landed Costs ●

STOCK MODULE

- Product ●
- Stock In ●
- Stock Out ●
- Warehouse Transfer ●
- Stock Revaluation ●

PROCUREMENT PROCESS

MySoft ERP makes your procurement process easier, such as creating purchase requisition, purchase orders, goods received, settling supplier payment and procure items from different geographies with multiple currency options available.

Your company can be benefited from effective order management with the pricelist and BOM-based ordering capabilities. Furthermore, top management approval control for purchase to keeping your purchase is legit and authorized.

WAREHOUSE AND GOODS RECEIVE

By linking your purchase order to inventory control, you can access exact stock quantities, stock movement history and supplier lead times. The stock available quantities will immediately be reflected by your purchase. You may specify where you want the shipment to end up.

MySoft ERP also helps you in processing all the necessary processes involved in goods receipt more effectively. You can record your purchases quantity, delivery address and return defective goods, if any, to a supplier with a Credit Note. Each of the warehouse may record the actual quantity received against the quantity ordered to ensure goods received fully.

MATERIALS REQUISITION

Allowing all department to make a request for materials moved from warehouse and placed on the production floor for manufacturing process or making a request to purchase additional materials with management approval.

LANDED COST

MySoft ERP also allows you to calculate the purchase price of imported stocks. They can allocate the various landed cost elements (such as freight, insurance and customs duties) to the Freight on Board (FOB) cost of each item and secure your profit margin.

SUBCONTRACTING

With the integration of inventory, purchasing, and finance, it provides you the effective subcontracting management system. It allow you to send goods to a subcontractor to process into a better product.

SALES AND BILLING MANAGEMENT

Effective sales process management to create sales orders by pick up from sales quote and timely invoicing to payment receipt with MySoft ERP.

MODULES INVOLVED

CUSTOMER MODULE

- Sales Entry/Journal •
- Credit Note/Journal •
- Cash Sales/Journal •
- Customer Receipt/Journal •
- Customer Refund/Journal •
- Batch Matching •

SALES ORDER MODULE

- Sales Quotation •
- Sales Order •

INVOICING MODULE

- Issue Delivery Order •
- Issue Invoice •
- Issue Debit Note •
- Issue Credit Note •
- Issue Cash Sales •
- Issue Replacement •

STOCK MODULE

- Product •
- Stock In •
- Stock Out •
- Warehouse Transfer •
- Stock Revaluation •

SALES PROCESS

MySoft ERP eases your business operations, such as creating sales orders, issues delivery order, issues invoice, making customer receipts and allowing you to receive defective goods from customers. Furthermore, gross profit can be calculated for each document and revised sales order version can be viewed and exported to Microsoft Excel / PDF easily.

PURCHASING INTEGRATION

Back-to-back purchase features offering by converting sales order to purchase orders easily and allowing you to maintain inventory at a minimum level. You can even pre-create a template with the memorize features and save it for future use, it helps in saving your time by listing out the products one-by-one.

CREDIT TERMS AND CREDIT LIMIT CONTROL

Mysoft ERP system auto-check and block customer who exceed their credit terms and credit limit during sales processing (prior to release). Auto release the hold when payment is entered or sales approval from your or top management.

MULTIPLE AND PARTIAL DISPATCHING

Complete the sales order from more than one warehouse then split the sales order into multiple shipments from the different warehouse based on availability and costs.

DAMAGED PRODUCTS RETURN

Process product return by issuing a replacement or issue credit note with return code to specifies product return's reason such as stock damaged.

MYSOFT CORPORATION SDN BHD - MySoft ERP

File Maintenance Transaction Reports Window Help

Invoice Quick View

Date	Invoice No	Salesmen	Customer	Customer Name	Your Ref No	Amount	Balance	Delivery Name	Is Cancel	Currenc	Posted
20/01/2019	IN00001	0	CHE001	Herolutions Enterprise Sdn Bhd		308,000.00	308,000.00		<input type="checkbox"/>	MYR	<input checked="" type="checkbox"/>

Quickview Setting

SALES ORDER QUICK VIEW

MYSOFT CORPORATION SDN BHD - MySoft ERP

File Maintenance Transaction Reports Window Help

Customer: CHE001
Name: Herolutions Enterprise Sdn Bhd
Contact: Mr. Bulat Bin Tempawan
Address: Jln Haji Sirat, Taman Utama, 42100 Malaysia

Invoice: IN00001
Invoice Date: 20/01/2019
Due Date: 28/02/2019
Warehouse: none
Salesman: 0

Product Code	Quantity	Unit Sale Price	Amount	Tax Amt.	Disc %	UOM	Discount	Debit
MSI-MS65	20.00	14,000.00	280,000.00	28000.00	0		0.00	

Invoice Details | Delivery Address | Batch/Serial Details | Customized Fields

Product Code: MSI-MS65 | Extra Notes & Tax Codes: MSI WS65 9TK 687

Quantity: 20.00 | Unit Sale Price: 14,000.00 | Amount: 280,000.00 | Tax Amt.: 28000.00 | Disc %: 0 | UOM: | Discount: 0.00

Item Total: 280,000.00
Total Discount: 0.00
Tax Total: 28,000.00
Total Amount: 308,000.00

Receipt

INVOICE TRANSACTION SCREEN

TAX INVOICE

Herolutions Enterprise Sdn Bhd

Attn : Mr. Bulat Bin Tempawan
Jln Haji Sirat
Taman Utama
42100 Malaysia
Tel. 03-32646468 Fax : 03-32646469

Invoice No: IN00001
Date: 20-01-2019
Your Reference No:
Delivery Order No:
Analysis Order No:
Sales Person: 0
Terms: 30 Days
Customer Code: CHE001
Page: 1

NO	CODE	DESCRIPTION	QUANTITY	UNIT PRICE	DISCOUNT	TAX	AMOUNT
1	MSI-MS65	MSI WS65 9TK 687 Core i9 9880H / 2.3 GHz - Win 10 Pro - 32 GB RAM - 1 TB SSD NVMe - 15.6" 1920 x 1080 (Full HD) - Quadro RTX 3000 - 802.11ac, Bluetooth - matte black with gold diamond cut	20.00	14,000.00	0.00	28,000.00	280,000.00

E. & O.E.
No complaint will be considered unless notified within 10 days of this debit note date
All cheques should be crossed A/C payee only

Sub Total: 280,000.00
Item Discount: 0.00
Tax Total: 28,000.00
Net Total: 308,000.00

for MYSOFT CORP

INVOICE REPORT

TAX CREDIT NOTE

Herolutions Enterprise Sdn Bhd
Mr. Bulat Bin Tempawan 03-32646468
Jln Haji Sirat
Taman Utama
42100 Malaysia
Tel. 03-32646468 Fax : 03-32646469

Credit Note No: CN00001
Date: 22/01/2019
Analysis Code:
Form:
Term: 30 Days
Account Code: CHE001
Page: 1

NO	STOCK CODE	DESCRIPTION	QUANTITY	UNIT PRICE	TAX	DISCOUNT	AMOUNT
1	MSI-MS65	MSI WS65 9TK 687 Core i9 9880H / 2.3 GHz - Win 10 Pro - 32 GB RAM - 1 TB SSD NVMe - 15.6" 1920 x 1080 (Full HD) - Quadro RTX 3000 - 802.11ac, Bluetooth - matte black with gold diamond cut	2.00	14,000.00	280.00		28,000.00

Sub Total: 28,000.00
Tax Total: 2,800.00
Net Total: 30,800.00
Base Amount MYR: 30,800.00

For MYSOFT CORPORATION SDN BHD

Top & Authorised Signature
The Best

System developed by Mysoft
Report Printed by MylakSystem

CREDIT NOTE

OFFICIAL RECEIPT

MYSOFT CORPORATION SDN BHD
Suite 1-35, Block 4809, CBD Perdana 2,
Jalan Pesariran Flora, Cyber 12,
63000 Cyberjaya Selangor.
Tel: 03-86010698 Fax: 03-86010699

NO: ARR00001

Herolutions Enterprise Sdn Bhd	Account Code	CHE001
Jln Haji Sirat Taman Utama 42100 Malaysia	Cheque No	CIMB20190131
	Date	31/01/2019
	Amount (MYR)	277,200.00

THIS RECEIPT IS APPLICABLE TO: AMOUNT APPLIED (MYR)

IN00001 20/01/2019	277,200.00
--------------------	------------

Cheque Amount: 277,200.00

TWO HUNDRED SEVENTY-SEVEN THOUSAND TWO HUNDRED ONLY

This receipt is only valid upon clearance of this cheque.

Authorised Signature

CUSTOMER RECEIPT

- Create Cash Sale - Generate cash sales receipt to your customer as a payment record. Normally keep back currency as by invoice.
- Create Sales Orders - Generate sales order easily by picking up the complete sales information as in customer quotation, avoiding double work and mistakes.
- Create Invoice - Generate invoice easily by picking up the complete sales information as in sales orders or delivery orders. Calculate sales tax, finance charges, and discounts.
- Create Credit Note - Provide credit note for the customer who returns their products back to you due to stock damaged or various reasons.

CUSTOMER MANAGEMENT

The effective tools to manage the entire sales process and customer life-cycle – from initial contact to final sales, to after-sales service and support.

MODULES INVOLVED

CUSTOMER MODULE

Maintenance

- Customer Details •
- Customer Category •
- Customer Status •
- Matrix Category •
- Sales GL Code •
- Customer Matching •
- Customer Settings •

Reports

- Customer Statements •
- Customer Ageing •
- Address Label •
- Customer Ledger •
- Customer Day Book •
- Customer List •
- Future Due List •

ACCOUNT MANAGEMENT

Maintain comprehensive customer details, including their opening balance information, payment terms, shipping address, contact information even configuring specify sales code, tax type and currency transaction type for each of the customers.

CREDIT TERMS AND CREDIT LIMITS CONTROL

Set Credit Terms to control your customers' payment on the products or services received to improve your business cash flow and Credit Limit to avoid the increases of overdue invoices and bad debts.

Customer History							
Invoice DO SO/SQ							
Date	Voucher No	Reference	Description	Debit Amount	Credit Amount	Balance	Curr
31/01/2019	ARR00001	CIMB20190131	RECEIPT - IN00001	0.00	277,200.00		MYR
22/01/2019	CN00001	CN00001	CREDIT NOTE	0.00	30,800.00		MYR
20/01/2019	IN00001	IN00001	SALES INVOICE	308,000.00	0.00	0.00	MYR

Total Debit Amount	<input type="text" value="308,000.00"/>	Outstanding Invoice	<input type="text" value="0.00"/>
Total Credit Amount	<input type="text" value="308,000.00"/>		
Balance Amount	<input type="text" value="0.00"/>		

CUSTOMER HISTORY

CUSTOMER HISTORY

Maintaining the complete activities history records associated with the customers, from sales order/quotation, delivery orders to invoice and access the detail information easily by click-to-view.

With the sales integration, you can better understand and meet your customer needs more precisely from their activities history. Thus, you can increase sales and profitability and increase customer satisfaction.

MYSOFT CORPORATION SDN BHD - MySoft ERP

File Maintenance Transaction Reports Window Help

Customer Quick View

Customer Code	Customer Name	Total Sales	Total Receipts	Balance	Credit Limit	Currency	Phone No	Fax No	Email Address	Web Address
cash	Cash Account	0.00	0.00	0.00	0.00	MYR				
CHE001	Herolutions Enterprise Sdn Bhd	277,200.00	277,200.00	0.00	0.00	MYR	03-32646468	03-32646469	www.herolutions.com.my	bulat@herolutic
CMO001	Mountanet Worlds Corporation Sdn Bhd	0.00	0.00	0.00	0.00	MYR	06-7674679	06-7674678	www.mountanet.com.my	junita@mounta
CPR001	Prime Way Sdn Bhd	0.00	0.00	0.00	0.00	MYR	06-4982494	06-4982495	www.prime.com.my	dian@prime.cor

MYSOFT CORPORATION SDN BHD - MySoft ERP

File Maintenance Transaction Reports Window Help

Customer Details - Herolutions Enterprise Sdn Bhd

Details Default Settings Sales Graph History Memo Opening Balance Customized Fields Contact

Customer Details

Customer Code: CHE001 Company No: 12345-H

Customer Name: Herolutions Enterprise Sdn Bhd

Long Name: [Empty]

Address Line 1: Jln Haji Srati

Address Line 2: Taman Utama

Address Line 3: 42100 Malaysia

Address Line 4: [Empty]

Phone No: 03-32646468 Fax: 03-32646469

Email Address: www.herolutions.com.my

Web Address: bulat@herolutions.com.my

Contact Address

Contact Person	Designation	Phone No	Hand Phone No
Mr. Bulat Bin Tempawan	Managing Director	03-32646468	

Attachment Save Edit

Copyright (C) 1998 - 2019 MySoft Corporation Sdn Bhd

GO TO Main Menu

MYSOFT CORPORATION SDN BHD Manager sit at www.mysoft.com.my. This product is demo version. v1 05:38:49 PM [AccDatabase19] v10.101.209 CLOUD SERVICE : ON

CUSTOMER QUICK VIEW

CUSTOMER DETAILS

MYSOFT CORPORATION SDN BHD

Customer Ledger Print Date :
Page : 1

Customer Code [] To [ZZZZZZZ]
Date of Report [01/01/2019] to [31/12/2019]
Analysis Code [All]
Salesman Code [All]
Debtor Control A/c [All]

Date	Voucher No	Reference No	Description	Base Amount	Rate	Debit	Credit	Balance	Gain/Loss
CHE001 Herolutions Enterprise Sdn Bhd									
20/01/2019	IN00001	IN00001	SALES INVOICE	308,000.00	* 1	308,000.00		308,000.00	
22/01/2019	CN00001	CN00001	CREDIT NOTE	(30,800.00)	* 1		30,800.00	277,200.00	
31/01/2019	ARR00001	CIMB20190131	RECEIPT - IN00001	(277,200.00)	* 1		277,200.00	0.00	
				0.00MYR		308,000.00	308,000.00		
			TOTAL MYR			308,000.00	308,000.00		
			Total			0.00			

CUSTOMER LEDGER REPORT

- **Edit Customer Details** - Edit and ensure customer information are staying up-to-date. Process sales order and invoice to the correct person in charge.
- **Export Customer List** - Export customer list to CSV or PDF format for editing in a spreadsheet format and viewing. Time-saving with printing customer's mailing address.
- **Add New Customer** - Maintain comprehensive customer details including their opening balance, payment terms, shipping address, contact information.
- **Customer Classification** - Filtering the customers bases on the total sales, total receipt and credit limit or grouping the customer based on the category or area for marketing activities.

SUPPLIER MANAGEMENT

Managing your comprehensive supplier information and making purchase requisition based on material requisition easily by MySoft ERP.

MODULES INVOLVED

SUPPLIER MODULE

Maintenance

- Supplier Details
- Supplier Category
- Department
- Branch
- Zone
- Purchase GL Code
- Supplier Matching
- Supplier Settings

Reports

- Supplier Outstanding
- Supplier Ageing
- Supplier Ledger
- Supplier Day Book
- Supplier List
- Supplier Invoice List
- Supplier Due List

MANAGING A GROWING SUPPLIER BASE EFFECTIVELY

Maintain comprehensive supplier information correctly such as their opening balance information, payment terms & contact information is one of the critical things in managing suppliers. Effectiveness in this area can help drive administrative costs down.

PURCHASE REQUISITION BASED ON MATERIAL REQUISITION

You can enter a list of items or service to purchase into the Material Requisition and convert it into multiple Purchase Requisitions based on the different supplier for approval. You can then convert to Purchase Order and auto Email to Supplier. Supplier can confirm the PO easily by clicking the button in the email.

ON HOLD SUPPLIER PAYMENT OR SUGGESTED SUPPLIER PAYMENT BASED ON THE DUE DATE

MySoft ERP provide the options to you whether to proceed the supplier payment or on hold the payment for the Purchase Order. By on holding the Supplier Payment, you will be secured by the system and ensure you will not proceed the payment for the on hold Purchase Order accidentally during the Supplier Payment.

MySoft ERP can also generate the suggested supplier payment based on the due date, therefore, you will not paying your supplier too early and maintain the sufficient cash flow in the company.

Date	Voucher No	Reference	Description	Debit Amount	Credit Amount	Balance
31/01/2019	APD00001	SPI20190131	MSI WS65 9TK 687	0.00	198,000.00	0.00
31/01/2019	APP00001	CIMB20190131	PAYMENT OF ACCOUNT - J	198,000.00	0.00	

Total Debit Amount: 198,000.00
Total Credit Amount: 198,000.00
Balance Amount: 0.00

SUPPLIER HISTORY

SUPPLIER HISTORY

Maintaining the complete activities history records associated with the supplier and access the detail information easily by click-to-view.

Supplier Quick View

Supplier Code	Supplier Name	Total Purchase	Total Payments	Balance	Credit Limit	Currency	Phone Number	Contact Person	Designation	Hand Phone No 1
SAL001	Alpine Corporation Sdn Bhd	198,000.00	198,000.00	0.00	0.00	MYR	03-32911780	Ms. Mahsuri binti Bjaya	Managing Director	
SHU001	Hurricane Corporation Sdn Bhd	0.00	0.00	0.00	0.00	MYR	05-3773261	Mr. Bongsu bin Saadong	Managing Director	
SPI001	Pixel Wood Enterprise	0.00	0.00	0.00	0.00	MYR	03-56343770	Mr. Hapsah bin Bongsu	Managing Director	

SUPPLIER QUICK VIEW

Supplier Details - Alpine Corporation Sdn Bhd

Supplier Code: SAL001 Company No: 12345-H

Supplier Name: Alpine Corporation Sdn Bhd

Long Name: 55 Jalan Klg Perdana 2 A

Address Line 1: Taman Klg Perdana

Address Line 2: 42100

Address Line 3:

Address Line 4:

Phone No: 03-32911780 Fax No: 03-32911781

Email Address: www.alpine.com.my

WebSite: mahsuri@alpine.com.my

Person Name	Designation	Phone No	Hand Phone No
Ms. Mahsuri binti Bjaya	Managing Director	03-32911780	

New Attachment Save Exit

SUPPLIER DETAILS

Supplier Ledger

Supplier Code [] To [77777777]

Supplier Category [] To [77777777]

From Date [01/01/2019] To [31/12/2019]

Creditor Control A/c [All]

Print Date : Page : 1

Date	Voucher No	Reference	Description	Base Amt	Rate	Debit	Credit	Balance	Gain/Loss
31/01/2019	APD00001	SPI2019013	MSI WS65 9TK 687	(198,000.00)	* 1		198,000.00	(198,000.00)	
31/01/2019	APP00001	CIMB20190	PAYMENT OF	198,000.00	* 1	198,000.00		0.00	
		131	ACCOUNT - APD00001						
				0.00	MYR	198,000.00	198,000.00		
			TOTAL MYR			198,000.00	198,000.00		
			TOTAL	0.00					

SUPPLIER LEDGER

- **Maintain Supplier Comprehensive Information** - Keep comprehensive supplier information in MySoft ERP, such as their opening balance, contact information, and credit terms.
- **Up-to-date supplier details** - Updates your supplier's information whenever necessary and keep their information up-to-date.
- **Export Supplier List in different formats** - Export suppliers list in excel or PDF format in order to increase your administrative efficiency in postal prepare.

STOCK MANAGEMENT

The powerful stock management system provides comprehensive stock control, stock traceability and stock optimization to improve your business profitability.

MODULES INVOLVED

STOCK MODULE

Maintenance

- Product ●
- Product Category ●
- Product Group ●
- Product Class ●
- Warehouse ●
- Item Type ●
- UOM ●
- Packing Type ●
- Factor ●
- Sub Process ●
- Stock Settings ●

Transactions

- Stock In ●
- Stock Out ●
- Warehouse Transfer ●
- Stock Take ●
- Stock Adjustment ●
- Loan Delivery Order ●
- Loan Return ●
- Stock Revaluation ●

Reports

- Stock List ●
- Stock Movement ●
- Month End Stock ●
- Stock History ●
- Stock History with Price ●
- Stock with Batch/Serial ●

PRODUCT MASTER MAINTENANCE

Maintain comprehensive product information from the product's description, item types, product's weight to cost & sales price and minimum sales price easily with MySoft ERP. Configuring purchase and sales account for each product conveniently and set different product prices to assign for different customer category (such as wholesales customers, retail customers and etc) efficiently.

ITEM MASTER DATA

User can further define the product by Stock Item, Non-Stock Item, Kit, Assembly Item or Raw Material Item, Service Item or Labour. Detail default settings for the products such as purchasing supplier, purchasing and selling unit of measure, as well as the tax status such as Supply Tax, Purchase Tax and Tariff Code for the product. Furthermore, you can even record the lifetime for the perishable products.

BATCHES & SERIAL NUMBER CONTROL

System generated serial number or import into the system. They can be created and assigned upon release of an item from stock or optionally on every transaction. User can assign and classify batched product by shelf life or any other attributes that are freely definable.

STOCK OPTIMIZATION

Monitoring stock levels and stock movement has never been so easy. The integration with Materials Requirements Planning, you can now maintain your inventory at optimizing level by ordering what you need in response to demand. It also complemented by features such as "available-to-promise", which give your sales and production department reliable information of what they can promise to customers. MySoft ERP System also detects and alert you when the stock level quantity is lower than your defined minimum stock level allowed. System auto-suggest the stock minimum re-ordering quantity you defined for the shortage.

STOCK HISTORY

Maintaining the complete activities history records associated with the stock and access the detail information easily by click-to-view.

MYSOFT CORPORATION SDN BHD - MySoft ERP

File Maintenance Transaction Reports Window Help

Product / Service Quick View

Product Code	Product Name	Remark	Selling Price	Free Quantity	Quantity	Brand Name	Re-Order Qty	Re-Order Level	Ordered	Allo
MSI-MS65	MSI W565 9TK 687	LAPTOP	14,000.00	2.00	2.00	MSI	20.00	5.00	0.00	
T480-20L5	Lenovo ThinkPad T480 20L5	LAPTOP	4,799.00	20.00	25.00	Lenovo	20.00	5.00	0.00	
X40-F1454	Dynabook Toshiba Tecra X40-F1454	LAPTOP	5,830.00	0.00	0.00	Toshiba	20.00	0.00	20.00	

MYSOFT CORPORATION SDN BHD - MySoft ERP

File Maintenance Transaction Reports Window Help

Finished Product / Raw Material / Machine Cost / Service Details

MSI W565 9TK 687

Product Details Default Settings Price & Discount Settings Customized Fields StockCode

Product Code: MSI-MS65
 Product Name: MSI W565 9TK 687
 Remark: LAPTOP
 Description: Core i9 9880H / 2.3 GHz - Win 10 Pro - 32 GB RAM - 1 TB SSD (NVMe - 15.6" 1920 x 1080 (Full HD) - Quadro RTX 3000 - 802.11ac. Bluetooth - matte black with gold diamond cut

Brand Name: MSI
 Category: 0
 Group: 0
 Class: 0
 Item Type: Stock Item
 Last Serial No.: 000019
 Serial No.:
 Warranty/Expiry (Months): 0

Sales Price: 14,000.00
 Min. Sales Price: 13,000.00
 Salesman Comm.: 0.00
 Gross Weight(Kg): 1.9
 Volume: 0
 Re-Order Qty: 20.00

Cost Price: 9,000.00
 Base UOM: KG
 Net Weight (Kg): 2.2
 Re-Order Level: 5.00
 Update cost:

Keep Warranty Date:

Main Store Stock Status:
 In Stock: 2.00
 Allocated: 0.00
 On Order: 0.00
 Free Stock: 2.00
 Avg Cost: 9,000.00
 Inclusive Tax:

Buttons: Print Product, New, Copy Stock Details, Attachment, Save, Exit

PRODUCT / SERVICE QUICK VIEW

PRODUCT / SERVICE DETAILS

MYSOFT CORPORATION SDN BHD

STOCK HISTORY

Date Of Report [01/01/2019] To [31/12/2019]
 Item Code [] To [ZZZZZZZ]
 Warehouse [] To [ZZZZZZZ]
 Category Type [] To [ZZZZZZZ]
 Item Type [All]

Print Date :
 Page No : 1

Voucher No	RefNo	RefDate	Warehouse	Quantity		
				IN	OUT	Balance
Itemcode: MSI-MS65						
Description: MSI W565 9TK 687						
GRN00001	POP00001	10/01/2019	none	20.00		20.00
CN000001		22/01/2019	none	2.00		22.00
IN000001		20/01/2019	none		20.00	2.00
				22.00	20.00	
Itemcode: T480-20L5						
Description: Lenovo ThinkPad T480 20L5						
GRN000003	POP00004	05/02/2019	none	5.00		5.00
GRN000002	POP00002	11/02/2019	none	20.00		25.00
				25.00	0.00	
Grand Total:				47.00	20.00	27.00

PRODUCT REPORT

- **Real-Time Dashboards** - Product Quick View provides you the real-time stock data such as stock selling price, available stock quantity and ordered quantity.
- **Complete Visibility of Your Supply Chain** - Complete tracking and control your supply chain process and automate stock levels update process whenever sales and purchases are made.
- **Add Or Edit Product** - Maintain and update the product's details information, such as the product's description, item types, product's weight to cost & sales price and minimum sales price.
- **Inventory Report** - Get basic stock report view for the for each product and it Unit of Measurement and supplied by which suppliers. Others advance detail stock reports are available such as Stock Movement, Stock History with Price and Batch/Serial Number, Month End Stock.

FINANCE AND ACCOUNTING

MySoft ERP provides Finance and Accounting Department to record, organize, manage and analyze all financial activities easily.

MODULES INVOLVED

GENERAL LEDGER MODULE

- Chart of Account ●
- Budget Setting ●
- Period Setting ●
- GL/Cash Book Settings ●
- Journal Entry ●
- Bank Reconciliation ●
- Closing Stock ●
- Recurring ●

FINANCE AND ACCOUNTING

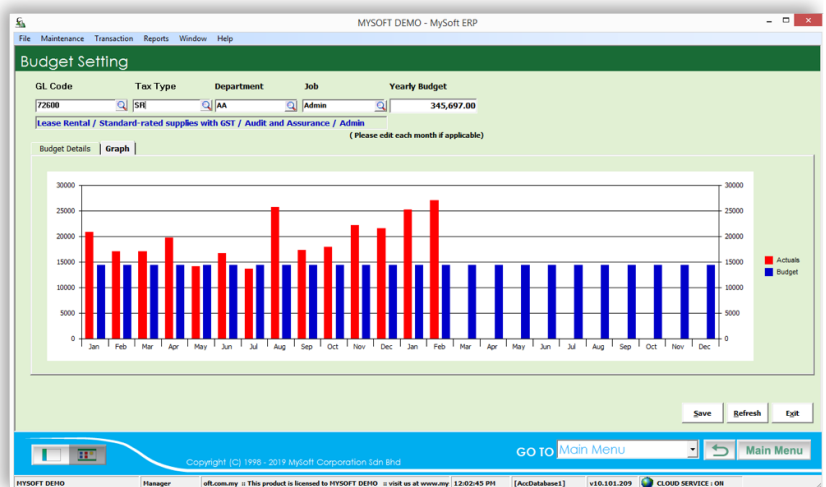
MySoft ERP comprises a set of comprehensive tools to assist you in managing and streamline your financial operation. It allows you to record and manage all financial activities such as journal entries, multi-currency transactions, and tax calculation to ensure you are compliance with standard accounting policies. Furthermore, journal entries are supported to post automatically from sales, purchasing, and banking.

BANK RECONCILIATION

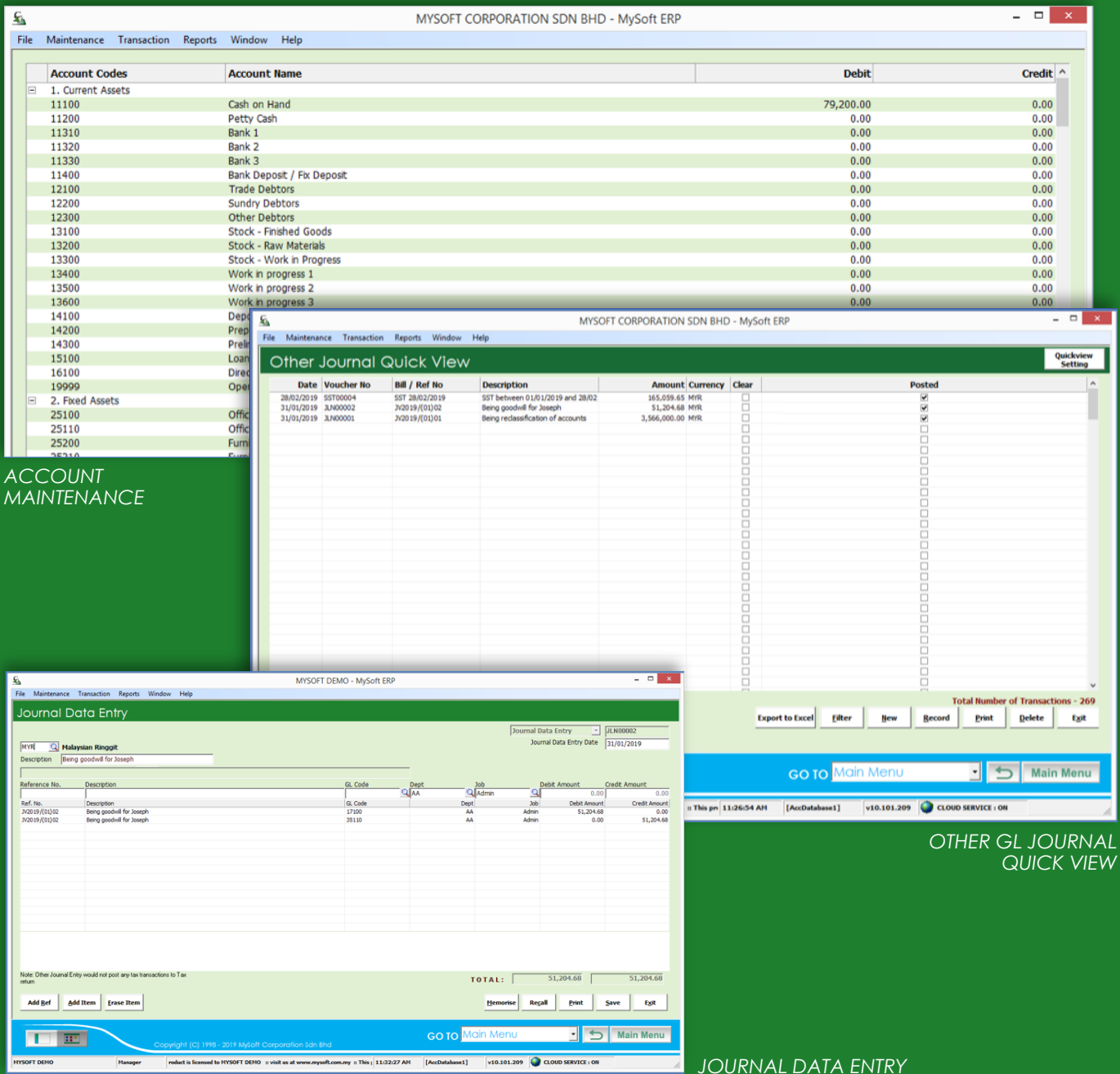
Bank reconciliation provides you the difference between the bank balance shown in a business's bank statement, as given by the bank against the amount shown in the Cash Book Module. Both the business bank statement and Chart of Accounts should be tally.

BUDGETARY CONTROL

User can configure budget allocation to each General Ledger Codes and display a summarized budget report that compares actual and planned figures.



BUDGET SETTING



ACCOUNT MAINTENANCE

OTHER GL JOURNAL QUICK VIEW

JOURNAL DATA ENTRY

- **Chart of Accounts** - A single integrated view of all enterprise accounts through an interactive chart of accounts keeps you up-to-date at all times. Besides staying up-to-date, users can add new types of accounts, and define properties.
- **Journal Entry** - Make multiple entries/transactions at once, lesser errors with preconfigured consistency checks, and classify accounts for incorporating automatic debit and credit rules.
- **Account Preferences** - Set financial year parameters, configure account settings, generate auto-numbering for invoices, journal entries, purchase orders, sales orders and more.

FINANCIAL REPORTING

Streamline financial reporting process and generate reporting rapidly and accurately with MySoft ERP

MODULES INVOLVED

GENERAL LEDGER MODULE

- Balance Sheet •
- Profit and Loss •
- Trial Balance •
- General Ledger Listing •
- Audit Trail •
- Chart of Accounts •
- Budget Analysis •
- Management Report •
- Revaluation Report •

SUPPLIER MODULE

- Supplier Outstanding •
- Supplier Ageing •
- Supplier Ledger •
- Supplier Day Book •
- Supplier Due List •

CUSTOMER MODULE

- Customer Outstanding •
- Customer Ageing •
- Customer Ledger •
- Customer Day Book •
- Future Due List •

AUTOMATING REPORTING PROCESSES

With MySoft ERP, the task associated with preparing complex and details reports such as financial statements, balance sheets, regulatory data or even forecasting information can be automated and easily be generated at any given point during the financial period rapidly and accurately. You can save more on labor costs in hiring accounting staffs and freeing valuable human resources to monitor and check the reports are within a framework for regulatory compliance and free of errors.

UNLIMITED YEARS OF HISTORY

MySoft ERP support to save huge amounts of data spanning an unlimited number of years without the needs of clearing the old histories to maintain the system's efficiency. You can even backup your data in an external drive for keeping an extra backup. Sales and Service Tax (SST) registered persons are required to keep relevant records of SST submissions for a period of 7 years.

FINANCIAL REPORTS COMPARISON ANALYSIS

MySoft ERP allowing you to analyze your company financial performance by comparing the key sections of the balance sheet and income statement, among other financial reports by year, periods or quarterly. Thereby assist you in better understanding and forecasting the market trend and achieve better strategic decision-making for future operating activity.

FINANCIAL REPORTING AND ANALYSIS INTEGRATED WITH MICROSOFT

MySoft ERP integrated with Microsoft to allows you to generate financial reports in a variety of different formats including Microsoft® Excel®, Microsoft® Word®, and PDF. The database is perfectly supported to synchronize in Microsoft Excel and provide your further report customization and enhance available.

SUPPLIER AGEING

Supplier ageing report provides you an overview of respective supplier's payables & assists you in fore casting your cash outflows.

CUSTOMER AGEING

Customer ageing report provides you an overview of unpaid customer invoices and assists you to determine which invoices are overdue for payment.

MYSOFT CORPORATION SDN BHD

PROFIT & LOSS A/C For the Month Of December 2018

Zone : All
Branch : All
Dept : All
Job : All

Print Date : 31/12/2018

	December	%	Year to Date	%
Income				
SALES ACCOUNT 1	140,273.46	100.0%	2,729,473.47	99.9%
SALES ACCOUNT 2			2,670.62	0.1%
Total Income	140,273.46		2,732,144.09	

Cost Of Goods Sold
 COST OF SALES
 COST OF MATERIALS
Total Cost Of Goods Sold

Gross Profit

MYSOFT CORPORATION SDN BHD

TRIAL BALANCE (MYR)

To Date [31/12/2018]

Print Date: 31/12/2018
Page: 1

Code	Name	Debit	Year To Date Credit
10111	RENOVATION OPENING BALANCE	640,760.70	
10112	RENOVATION ADDITIONS	33,520.00	
10113	RENOVATION DISPOSALS		256,499.00
10121	EQUIPMENT OPENING BALANCE	213,395.90	
10122	EQUIPMENT ADDITIONS	438,308.00	
			33,859.00
		100,670.00	
		60,293.00	

PROFIT & LOSS

BALANCE SHEET

MYSOFT CORPORATION SDN BHD

Audit Trail

GL Code [] To [ZZZZZZ]
From Date [01/01/2018] To [31/12/2018]
User Id []

Print Date : 31/12/2018
Page No: Page 1 of 100

Date	Voucher No	Reference No	GL Code	Dept	Job	G/L Name / Description	Debit	Credit
01/01/2018	JRC15824	MySoft20181231	20320	0	0	ADVANCE BILLINGS	2,527.00	
01/01/2018	JRC15824	MySoft20181231	40100	0	0	TECHNICAL REVENUE		2,527.00
01/01/2018	JRC15825	MySoft20181231	20320	0	0	ADVANCE BILLINGS	572.00	
01/01/2018	JRC15825	MySoft20181231	40100	0	0	TECHNICAL REVENUE		572.00
01/01/2018	JRC15826	MySoft20181231	20320	0	0	ADVANCE BILLINGS	802.00	
01/01/2018	JRC15826	MySoft20181231	40100	0	0	TECHNICAL REVENUE		802.00
01/01/2018	JRC15827	MySoft20181231	20320	0	0	ADVANCE BILLINGS	1,000.00	
01/01/2018	JRC15827	MySoft20181231	40100	0	0	TECHNICAL REVENUE		1,000.00
01/01/2018	JRC15828	MySoft20181231	20320	0	0	ADVANCE BILLINGS	1,374.45	

AUDIT TRAIL

- **General Ledger** - View general ledger accounts anytime with financial transactions updates. You can also drill down from ledger accounts to the specific journal for easy transaction viewing or document hyperlink by double click the voucher number.
- **Profit and Loss Statement** - Profit and Loss Statement providing you a clear view of your business operation performance by summarizing the business revenue, costs, and expenses incurred during a specified financial period.
- **Audit Trail Availability** - You can easily check the double entry details from the audit report with MySoft ERP.
- **Trial Balance** - A financial statement provides you the key figures you need to analyze where your business stands by providing a visual representation of the standard accounting equation: Assets=Liabilities Equity.

MYSOFT ERP FLEXIBLE DEPLOYMENT OPTIONS

MySoft ERP designed to be flexible and allowing you to choose whether to deploy the system on-premise or in the cloud. You will have direct access to data and safer for system deployed on-premise, on another hand, you can access MySoft critical data at anywhere and any time from cloud.

MYSOFT ERP ON-PREMISE SOLUTION

Deploy MySoft ERP on-premise and stay compliance with Data Security Policies

MySoft ERP can be deployed on-premise environment by using your company existing internal hardware and infrastructure. Deploying ERP solution on-premise often means putting time, money and office space towards setting up and managing an internal server. However, allowing you to stay in compliance with internal Data Security Policies and ease of direct local data and report control and access. Furthermore, of course, you have less dependence on internet connection.

>> EXISTING INTERNAL HARDWARE AND INFRASTRUCTURE

You may develop your ERP solutions in the existing internal hardware and infrastructure in office space, you will have less dependence on the internet connection.

>> DATA COMPLIANCE

Deploying MySoft ERP in the existing internal hardware allowing you to stay in compliance with internal Data Security Policies and reduce the risk of critical business data reveals to any third parties.

>> CUSTOMIZATION AND INTEGRATION

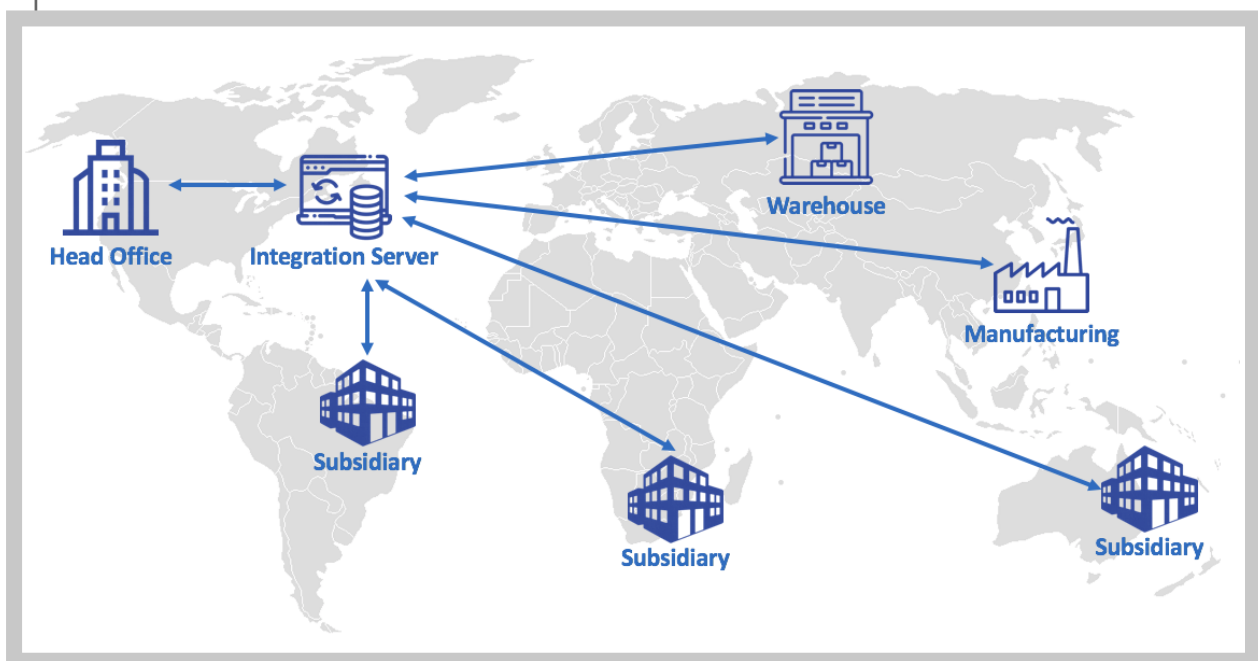
Direct access to local data, future software customization and upgrade can be done easily without strict restrictions. Furthermore, third-party system integration such as POS system for Physical Stores and E-Commerce solutions can be done best when MySoft ERP deployed on-premise.

MYSOFT ERP BRANCH INTEGRATION SOLUTION

Deploy MySoft ERP on the server for branch integration

- Branch Integration Solution**

With MySoft ERP, you can create multiple branches within the same server and share the resources and information across branches easily by branches integration solutions. All the different branches' transactions will be stored into one database and this solution reduces the effort of manual rekeying of data to maintain branches trading financial statements.



- Networking**

The items' master data such as the pricing will be allowed to sharing with branches.

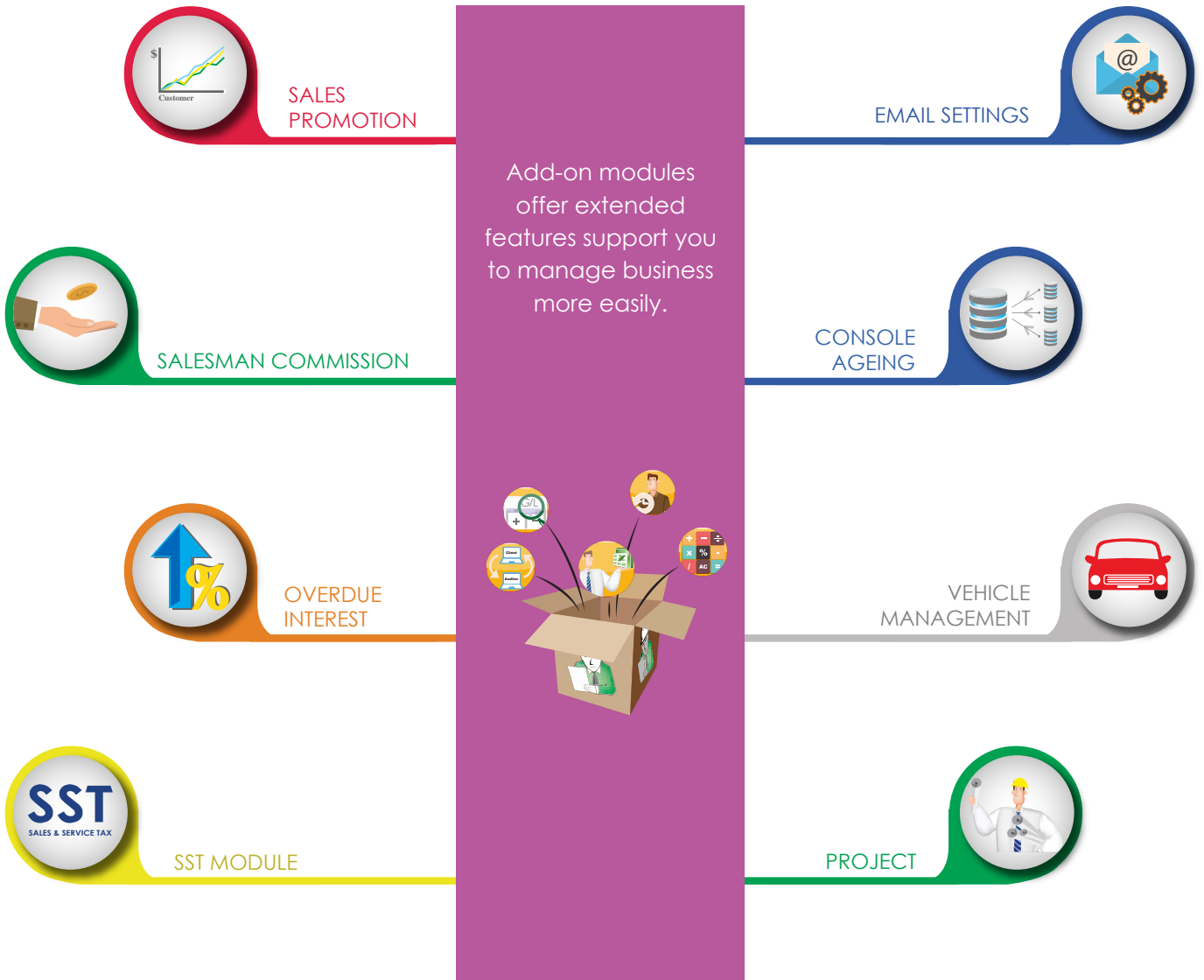
- Consolidated Reports**

Enabling you to consolidate all companies' reports to let you have clear views of your customer's total outstanding amount against the total credit limit.

- Branches Trading**

Allowing purchase and sales process to carry out between branches and also provision from centralized payment of supplier from head office.

MYSOFT ERP ADD-ON MODULES



THIRD PARTY INTEGRATE SOLUTIONS

Hotel Management System	POS System	E-Commerce
Mobile Sales & Purchase Apps	Mobile Month End Stocktaking	Mobile Fixed Assets Inventory Accounting
Staff e-Claim Management System		

SALES PROMOTION



Create your own unique sales promotion event with Sales Promotion Module.

Flexible Sales Promotion

Create unique and unlimited event promotion to give special discount for the given purchase quantity achieved and/or at the given promotion period easily with MySoft ERP's Sales Promotion.

You can set the items' promotional price based on the customer category such as member, retailer or distributor. Each different customer category given different promotion price against the items' category within the promotion periods.

Configuration on Promotion Period And Quantity Level

The sales promotion period configuration allowing you to Design both short-term and long-term sales and promotion plans with ease. Furthermore, quantity level configuration to encourage for minimum purchase quantity in order to entitle for sales promotion.

Customer Wise Discount Settings

Stock Category: 0 | None

Customer Code	Customer Name	Qty. Level	Promotion	Disc. % 1	Disc. % 2
CSAM001	MySoft Demo Customer	5	0	10	0.00

Customer Code: Customer Name

Search: [] [Insert Item]

CUSTOMER WISE DISCOUNT SETTINGS

Quantity Level Settings

Quantity Level	Description	From Quantity	To Quantity	Is Default
0	Standard quantity range	1	99999	<input checked="" type="checkbox"/>
5	From 5 & above	5	99999	<input type="checkbox"/>

New Delete Save Set Default Exit

QUANTITY LEVEL SETTINGS

Promotion Date Settings

Price Level	Description	From Date	To Date	Is Default
0	Standard date range	01/01/1900	31/12/2020	<input checked="" type="checkbox"/>

Price Level Code: Description

From Date: 14/08/2019 To Date: 14/08/2019

New Delete Save Set Default Exit

CUSTOMER WISE DISCOUNT SETTINGS

VEHICLE MANAGEMENT



Keeping vehicle comprehensive information details and easily search.

Vehicle Master Data

The vehicle management allowing your to register the comprehensive vehicle information such as vehicle's modal, the vehicle registration number, engine number, year and etc, which are useful for you and dealers to give feedback to the client faster and easily.

Vehicle Search And Filter

With Vehicle Management's quick view search function, you can search the vehicle by criteria such as the vehicle ID, vehicle model, engine number, chassis number and VSO. The basis for the search is always a specific vehicle model. You can even filter the vehicle list by vehicle's year made, capacity, colour and etc.

Vehicle Master Quick View

Vehicle Id	Model	Engine No	Chassis No	Year Made	Capacity	Colour	Location	List Price	Supplier	Status	VSO
T001	3ZR-FE	52WVC10338	2H2XA59BWDY987665	2019	2.0	BLACK		150000			
T002	4ZR-K	52WVC10338	3H3KA609WD	2019	1.5	BLACK		0			

Quick View Filter

Name	From	To
Vehicle Id	T001	T002
Model		
Engine No		
Chassis No		
Year Made		
Capacity		
Colour		
Location		
List Price		
Supplier		

VEHICLE MASTER QUICK VIEW

Vehicle Details

Vehicle Id: T001 | Chassis No: 2H2XA59BWDY987665

Model: 3ZR-FE | Colour: BLACK | Year: 2019 | CC: 2.0

Engine No: 52WVC10338 | Date Acquired: 16/08/2019

Fuel type: V-POWER | Internal no: | Supplier: |

Indent No: | Purchase price: 100000.00 | Made: JAPAN | A/P: |

Import Duty: 8000.00 | Duty paid: | Duty approved to be paid:

Location: | List price: 150000.00 | Reg No: M8888 | BL No: 8703000000

New/Used/Recond: NEW | Lot No: | Dealer price: 130000.00 | Grade: A

Additional Specs: | Remarks: 4-cylinder, In-line, 16-valve DOHC with Dual VVT-i

Image: Add Remove

Stock Allocation: Status: | VSO: |

List Price and Promotion | Save | Exit

VEHICLE DETAILS

VEHICLE LIST

VEHICLE ID	MODEL	ENGINE NO	CHASSIS NO	YEAR MADE	CAPACITY	COLOUR
T001	3ZR-FE	52WVC10338	2H2XA59BWD	2019	2.0	BLACK

VEHICLE LIST REPORT

PROJECT MANAGEMENT



Effective project management come from the visibility and monitoring provided by MySoft ERP.

Project Administration And Delivery Time

The MySoft ERP's project management module offering all the essential functions needed for you to manage you project more effectively. You can have the project planned ahead before starting and executing project smoothly. You can even view all your project from the project management's quick view and provide you the quick search functions by project type, customer name, project start date and more.

Project Tracking

You can now monitor the project's result against the pre-defined objectives. The project management allows you to record the project completion status by percentage. By monitoring the project's progress tightly, you can identify and analyze the project's issues and risks, from there take immediate actions and project execution improvement.

The Project Billing, Accounting and Profitability Calculation

You can define the cost centre related to your project. It also allowing you to calculate the overall project cost and generate invoice against the project completion easily. Furthermore, by leveraging the cost centre, you can make an analysis on the project profitability by comparing the planned versus actual expenses or revenue incurred for the project execution.

Project Quick View

Project Code	Description	Quotation	Customer Name	Customer P.O.	Start Date	Status
0	None				14/10/2013	IN PROGRESS
15228	MySoft Demo Project Description		MySoft Demo Customer Name	DO011088	01/09/2013	CANCELLED
15551	MySoft Demo Project Description		MySoft Demo Customer Name	DO011831	06/07/2011	IN PROGRESS
15707	MySoft Demo Project Description		MySoft Demo Customer Name	DO012260	12/10/2011	COMPLETED
15738	MySoft Demo Project Description		MySoft Demo Customer Name	DO012342	01/12/2011	COMPLETED
15883	MySoft Demo Project Description		MySoft Demo Customer Name	DO012780	02/07/2012	COMPLETED
15887	MySoft Demo Project Description		MySoft Demo Customer Name	DO012713	01/04/2013	COMPLETED
15888	MySoft Demo Project Description		MySoft Demo Customer Name	DO012714	11/05/2012	COMPLETED
15965	MySoft Demo Project Description		MySoft Demo Customer Name	DO012890	01/06/2012	COMPLETED
16007	MySoft Demo Project Description		MySoft Demo Customer Name	DO012994	01/09/2013	COMPLETED
16012	MySoft Demo Project Description		MySoft Demo Customer Name	DO013001	01/09/2013	IN PROGRESS
16030	MySoft Demo Project Description		MySoft Demo Customer Name	DO013060	01/09/2013	CANCELLED
16075	MySoft Demo Project Description		MySoft Demo Customer Name	DO013191	02/08/2012	COMPLETED
16162	MySoft Demo Project Description		MySoft Demo Customer Name	DO013415	10/01/2013	COMPLETED
16164	MySoft Demo Project Description		MySoft Demo Customer Name	DO013437	01/11/2012	COMPLETED
16172	MySoft Demo Project Description		MySoft Demo Customer Name	DO013460	01/11/2012	COMPLETED
16173	MySoft Demo Project Description		MySoft Demo Customer Name	DO013461	01/11/2012	COMPLETED

Project Details

Progress Billing and WIP | Revenue and COS Schedule | Additional Project Info | M E M O (Preparation)

Project No: 15738
 Project Description: MySoft Demo Project Description
 Customer Name: 100583 MySoft Demo Customer Name
 Team Leader:
 Team Member:
 Start Date: 01/12/2011 | End Date: 04/06/2014
 Project Category: CNT | Customer Quotation:
 Project Status: COMPLETED | Complete(%): 100.00
 Customer P.O.: DO012342
 Department:
 Remarks: IN012724/IN013702/IN013703

Project Details

Site Address | Additional Fields | M E M O (Preparation) | Project Details

Progress Billing and WIP | Revenue and COS Schedule | Additional Project Info

Percentage of Completion by: Certified (% Completion)

Project Value	Project Cost
Balance Sheet - Progress Billing: 203200.00	Balance Sheet - Work in Progress: 102600.00
Turnover/Revenue: 401000.10	Cost of Sales: 501200.10
Contract Value: 000.00	Total Estimate Project Cost: 000.00
Total Variation Order (VO): 000.00	Total Actual WIP Incurred Todate: 000.00
Total Project Value: 000.00	Total Actual WIP Charge Out Todate: 000.00
Total Progress Billing Todate: 000.00	Total Actual WIP Todate Balance: 000.00
Total Revenue Recognised Todate: 000.00	Estimate Cost to Complete: 000.00
Total Revenue Not Recognised: 000.00	Payment Received Todate: 000.00
Expected Progress Billing to Bill: 000.00	Retention Sum and Percentage: 0.00

Attachment | Save | Exit

PROJECT QUICK VIEW

PROJECT DETAILS

PROGRESS BILLING AND WIP

EMAIL SETTINGS



MySoft ERP integrate with your email to provides you the efficiency on managing bulk email and sending e-mail marketing easily

E-Statement Delivery

Delivery customer e-statement from report preview directly and reduce the administration cost of exports report then attach in each emails.

Online Approval for Purchase Requisition or Sales Order

Online approve the purchase requisition and sales order through approval email's link and auto update the document's status in MySoft ERP.

Supplier Email Acknowledgement

Supplier can confirm or reject your Purchase Order through the email's link and auto update the document's status in MySoft ERP.

The image displays a composite of three screenshots from the MySoft ERP system. The top screenshot, titled 'Email Reports', shows the 'E-mail Document' configuration interface. It includes a 'Choose Template' dropdown set to 'Statement of Account', an 'Email Subject' field with 'E-Statement for Month of December 2018', and a preview of the email content. The email content is addressed to a 'Dear Valued Customer' and includes contact information for the Finance Department. The middle screenshot shows a 'CONFIRM APPROVAL' dialog box with a green checkmark and the message 'SOP00023 has been approved.' The bottom screenshot shows an email titled '[POP00008] Purchase Order sent from (MYSOFT DEMO) Purchase Order' with a link to send an acknowledgment and a footer that reads 'This e-mail is auto generated by using MySoft ERP System Your Intelligent Business Partner'.

CUSTOMER E-STATEMENT

ONLINE APPROVAL FOR PURCHASE REQUISITION OR SALES ORDER

SUPPLIER EMAIL ACKNOWLEDGEMENT

SALESMAN COMMISSION



Manage and track salesman commission can be done so easily

Commissions can be paid at sales or receipt of payment from customer

Commissions can be paid at invoicing or deferred until customer payment is received.

Multi Level of Commission Methodology

You can set the different level of target achievement and rewards commission accordingly.

Define The Salesman's Commission Level

Define the salesman's commission level and rewards commission accordingly based on the Salesman Commission Master settings. Salesman commission can be rewarded individually or group's sales target achievement.

Printout Salesman Commission Report Easily

One click print out the salesman's commission base on sales can be so easy.

Sales	Amount From	Amount To	Commission(%)
1ST LEVEL	1,000.00	1,999.00	2.00
2ND LEVEL	2,000.00	3,999.00	3.00
3RD LEVEL	4,000.00	5,999.00	4.00
4TH LEVEL	6,000.00		
5TH LEVEL	7,000.00		
6TH LEVEL	8,000.00		
7TH LEVEL	10,000.00	100,000.00	

SALESMAN COMMISSION MASTER

Salesman / Employee Details

Edit/Delete Salesman Details

Code: E001 Area Code: SOUTH
 Name: ETHAN HO
 IC No.: 940511145205
 Join Date: 01/01/2019 Expiry Date: 31/12/9999
 KPI start date: 01/03/2019 Status: Active
 Address 1:
 Address 2:
 Address 3:
 Email Address:
 Phone No:
 Own Commission Level: SALESMAN COMMISSION
 Group Commission Level: GROUP COMMISSION
 Managed by:
 Department: S001 SOUTH SALESMAN DEPART
 Web Order Password:
 Buttons: New, Print, Delete, Save, Exit

SALESMAN / EMPLOYEE DETAILS

MySoft Demo

COMMISSION BASE ON SALE
 Commission Calculate By Direct For Own Sale/Receipt
 Date Between [01/08/2019] To [20/08/2019]
 Salesman Code [] To []

Print Date: 20/08/2019
 Page: 1

VoucherNo	ReferenceNo	InvoiceDate	Customer Code	Description	Receipt Amount	Commission	
SALESMAN E 001 ETHAN HO							
<u>Customer Receipts</u>							
IN00005	IN00005	20/08/2019	S 001	SALES INVOICE	7,200.00		
<u>Commissions</u>							
					Amount within From 7000 To 7999	7,200.00	432.00
					TOTAL COMMISSION FOR : E 001		432.00
SALESMAN E 002 EDWARD LIM							
<u>Customer Receipts</u>							
IN00006	IN00006	20/08/2019	S 001	SALES INVOICE	13,200.00		
IN00007	IN00007	20/08/2019	S 001	SALES INVOICE	30,000.00		
<u>Commissions</u>							
					Amount within From 10000 To 100000	43,200.00	4,320.00
					TOTAL COMMISSION FOR : E 002		4,320.00

SALESMAN COMMISSION REPORT

OVERDUE INTEREST



Manage, calculate and generate overdue charges can be done so easily.

Customer's Credit Term and Credit Limit Management

You can set the Credit Terms and Credit Limit for each of the customers in Customer Master. You can define whether to freeze the customer account who exceed their Credit Terms or Credit Limit automatically by system or user manual approve to release the customer invoice.

Assigning Late Payment Penalty Rate

You can set the late payment penalty rate for each of the customers in Overdue Interest Module. The overdue interest module provides user an easy way to calculate the overdue charges.

Customer Statement Calculate with Penalty Interest

You can generate customer statements to inform the customer of additional charges they have incurred for documents that are past due.

Customer Details - Ali Corporation Sdn Bhd

Default Settings: Debtor Control Code: 12100, Trade Debtors; Sales Code: 51100, Sales 1; Tax Type: CPE, Service Tax Exempted; Salesman Code: 0, None; Job Code: 0, None; Department Code: 0, None; Currency: MYR, Malaysian Ringgit; Category: ; Account Status: 1, Open; Sales Matrix Category: ; SST Settings: Sales/Service Tax No.: 000812345678; Sales Tax Exemption No.: ; SST Start Date: 01/09/2018; SST Service Tax Group: G

Credit Settings: Due at last day of the due month; Credit Period: 30 Days; Credit Limit: 100,000.00; Discount (%): 0; Area Code: KUALA LUMPUR; Statement Type: OPEN ITEM; Analysis Code: ; Joining Date: 01/01/2019; Opening Points: 0; Rounding Adj.; Retail Customer

GST Settings: G.S.T. Number: 10001/2015; G.S.T. Date: 01/04/2015

Grouping Setting (for Consolidated Ageing ADD-ON): Grouping Code: ; Attachment Save Exit

CUSTOMER DETAILS SETTINGS

OverDue Interest Default Setting

Interest Rate Setting: Annual Interest Rate: 5 %

Voucher: Debit Note

Interest GL Code: 50000, Default AR Sales

Tax Type: CP6, Services Tax 6%

OVERDUE INTEREST DEFAULT SETTING

OverDue Interest

Invoice(s) due at the end of: August 2019

Voucher: Debit Note

Posting Date: 30/09/2019

Cust. Code	Cust. Name	Due Date	Doc. Date	Voucher No	Reference	Amount	Payment	Balance	Amount	Rate (%)	Days Due	Interest	Select	Balance
MYSOFT01	Ali Corporation Sdn Bhd	31/01/2019	01/01/2019	IN00004	IN00004	50000	0	50000	50000	2	212	580.82	<input checked="" type="checkbox"/>	50000
MYSOFT01	Ali Corporation Sdn Bhd	31/03/2019	01/02/2019	IN00005	IN00005	20000	0	20000	20000	2	153	167.67	<input checked="" type="checkbox"/>	20000
MYSOFT01	Ali Corporation Sdn Bhd	31/03/2019	01/03/2019	IN00006	IN00006	25000	0	25000	25000	2	153	209.59	<input checked="" type="checkbox"/>	25000

Ali Corporation Sdn Bhd
Suite 6-789, Block 1234, CBD Perdana 4,
Jalan Persiaran Flora, Cyber 22,
63000 Cyberjaya Selangor.
TEL : 03-86010698 FAX NO : 03-86010699

STATEMENT

Date: 01/10/2019
Account No: MYSOFT01
Page: 1

Date	Reference No	Description	Debit	Credit	Balance
01/01/2019	IN00004	SALES INVOICE	50,000.00		50,000.00
01/02/2019	IN00005	SALES INVOICE	20,000.00		70,000.00
01/03/2019	IN00006	SALES INVOICE	25,000.00		95,000.00
30/09/2019	DN00003	DEBIT NOTE		580.82	95,580.82
30/09/2019	DN00004	DEBIT NOTE		167.67	95,748.49
30/09/2019	DN00005	DEBIT NOTE		209.59	95,958.08
			95,958.08	0.00	95,958.08

Current Month	1 Month	2 Month	3 Month	Above 4 Months	Future Receipt	Balance
0.00	958.08	0.00	0.00	95,000.00	0.00	95,958.08

1. If no remarks are made within 7 days, account will be considered as correct.
2. Payment received after the end of the month will be entered in next month's statement.
3. * mark for current month matching.

CUSTOMER STATEMENT CALCULATE WITH PENALTY INTEREST

CONSOLE AGEING



Console subsidiaries company's customers account back to HQ database and calculate each customers account's outstanding balance.

Console Ageing Settings

HQ and Subsidiaries company do the setting to define which company's database as HQ Database. The subsidiaries company's generated ageing report will console back to the defined HQ Database.

Console Ageing Process

The console ageing process allows you to generate the the ageing report based on your defined parameters and send it back to HQ Database for consolidating the received reports.

Consolidated Ageing Report

The HQ company receive the subsidiaries company's ageing reports to generate the consolidated data and show the total outstanding balance amount for each customers account.

Console Ageing Default Setting

Console HQ Database Setting

Console To HQ Database MYSOFT DEMO

CONSOLE AGEING SETTINGS

CONSOLE CUSTOMER AGEING

STATEMENT DATE: 31/12/2019

CUSTOMER CODE: MYSOFT01 TO: MYSOFT01 **Advanced**

FROM CATEGORY: 0 TO: 0

FROM SALESMAN: 0 TO: 0

MINIMUM BALANCE: 0.00 ANALYSIS CODE: All

DEBTOR CONTROL: All

AGEING BY MONTH
 AGEING BY DAYS
 12 MONTH AGEING

Month
 Month
 Month
 Month

Above ageing period is affecting the consolidated report filtering, for accuracy of the consolidated ageing report, please make sure all the companies ageing uploading with the same period setting.

Console To below company
[AccDatabase1]
MYSOFT DEMO

Preview and console to HQ Database
 Exit

CONSOLE AGEING REPORTS

MySoft Demo																																																																																																																																											
Customer Ageing Details										Print Date : 31/04/2019																																																																																																																																	
Customer Code [] To [ZZZZZZ]										Total Page : 1																																																																																																																																	
Date	Reference No	Description	Total	Rate	Base Amount	Age					Post Dated																																																																																																																																
						Current Month	1Month	2 Month	3 Month	Above 4 Months																																																																																																																																	
<table border="0" style="width:100%"> <tr> <td style="width:15%">MYSOFT01</td> <td colspan="10">Ali Corporation Sdn Bhd</td> </tr> <tr> <td>01/01/201</td> <td>IN00004</td> <td>SALES INVOICE</td> <td>50,000.00*1</td> <td></td> <td>50,000.00</td> <td></td><td></td><td></td><td></td> <td>50,000.00</td> <td></td> </tr> <tr> <td>01/02/201</td> <td>IN00005</td> <td>SALES INVOICE</td> <td>20,000.00*1</td> <td></td> <td>20,000.00</td> <td></td><td></td><td></td><td></td> <td>20,000.00</td> <td></td> </tr> <tr> <td>01/03/201</td> <td>IN00006</td> <td>SALES INVOICE</td> <td>25,000.00*1</td> <td></td> <td>25,000.00</td> <td></td><td></td><td></td><td></td> <td>25,000.00</td> <td></td> </tr> <tr> <td>01/04/201</td> <td>IN00001</td> <td>SALES INVOICE</td> <td>*1</td> <td></td> <td></td> <td>100,000.00</td><td></td><td></td><td></td> <td></td> <td></td> </tr> <tr> <td colspan="3">AR Total For (MYSOFT01)</td> <td>195,000.00</td> <td></td> <td></td> <td>100,000.00</td> <td>0.00</td> <td>0.00</td> <td>0.00</td> <td>95,000.00</td> <td>0.00</td> </tr> <tr> <td colspan="3">Total (MYR)</td> <td></td> <td></td> <td>195,000.00</td> <td></td><td></td><td></td><td></td> <td></td> <td></td> </tr> <tr> <td colspan="3">Currency Total For (MYR)</td> <td>195,000.00</td> <td></td> <td></td> <td>100,000.00</td> <td>0.00</td> <td>0.00</td> <td>0.00</td> <td>95,000.00</td> <td>0.00</td> </tr> <tr> <td colspan="3">Sub Total (MYR)</td> <td></td> <td></td> <td>195,000.00</td> <td></td><td></td><td></td><td></td> <td></td> <td></td> </tr> <tr> <td colspan="11">MYR Total :: 195,000.00</td> </tr> <tr> <td colspan="11">MYR Grand Total :: 195,000.00</td> </tr> </table>											MYSOFT01	Ali Corporation Sdn Bhd										01/01/201	IN00004	SALES INVOICE	50,000.00*1		50,000.00					50,000.00		01/02/201	IN00005	SALES INVOICE	20,000.00*1		20,000.00					20,000.00		01/03/201	IN00006	SALES INVOICE	25,000.00*1		25,000.00					25,000.00		01/04/201	IN00001	SALES INVOICE	*1			100,000.00						AR Total For (MYSOFT01)			195,000.00			100,000.00	0.00	0.00	0.00	95,000.00	0.00	Total (MYR)					195,000.00							Currency Total For (MYR)			195,000.00			100,000.00	0.00	0.00	0.00	95,000.00	0.00	Sub Total (MYR)					195,000.00							MYR Total :: 195,000.00											MYR Grand Total :: 195,000.00										
MYSOFT01	Ali Corporation Sdn Bhd																																																																																																																																										
01/01/201	IN00004	SALES INVOICE	50,000.00*1		50,000.00					50,000.00																																																																																																																																	
01/02/201	IN00005	SALES INVOICE	20,000.00*1		20,000.00					20,000.00																																																																																																																																	
01/03/201	IN00006	SALES INVOICE	25,000.00*1		25,000.00					25,000.00																																																																																																																																	
01/04/201	IN00001	SALES INVOICE	*1			100,000.00																																																																																																																																					
AR Total For (MYSOFT01)			195,000.00			100,000.00	0.00	0.00	0.00	95,000.00	0.00																																																																																																																																
Total (MYR)					195,000.00																																																																																																																																						
Currency Total For (MYR)			195,000.00			100,000.00	0.00	0.00	0.00	95,000.00	0.00																																																																																																																																
Sub Total (MYR)					195,000.00																																																																																																																																						
MYR Total :: 195,000.00																																																																																																																																											
MYR Grand Total :: 195,000.00																																																																																																																																											
Company Information																																																																																																																																											
Comp. Name	DBName		AgeingDate																																																																																																																																								
MySoft Demo	AccDatabase1		27/08/2019																																																																																																																																								
MySoft Demo	AccDatabase1		27/08/2019																																																																																																																																								
MySoft Demo	AccDatabase1		27/08/2019																																																																																																																																								
MySoft Demo 2	AccDatabase2		27/08/2019																																																																																																																																								

CONSOLIDATES AGEING REPORTS

SST MODULE STATUTORY COMPLIANCE

Filling your SST return accurately and staying compliance with latest SST legislation.

MODULES INVOLVED

SST MODULE

- SST Tax Code ●
- SST Tax Default Setting ●
- Sales Tax Adjustment ●
- Purchase Tax Adjustment ●
- SST-02 Return ●
- Generate GAF ●
- Detailed Tax Report ●

RMCD Recognized Tax Management System

MySoft ERP is a Royal Malaysian Customs Department (RMCD) recognized enterprise resource planning system and covers all the aspects related to audit processes as conducted by the RMCD. Mysoft ERP helps various companies from different industries to furnish all required accounting information and to provide correct tax declaration to the RMCD, it made the audit processes easier and hassle-free.

Integration With Financial Modules

SST Tax Module is integrated with all Financial Modules that require tax calculation within the MySoft ERP. Tax calculation is carried out automatically based on the tax type assigned to customer, supplier and the tax category assigned to inventory items. Manual tax adjustments are also possible in MySoft ERP.

Streamlined Tax Return Filing

Populating and filing tax returns is traditionally one of the most time-intensive components of the sales and use tax management process. However, Tax module within the MySoft ERP allowing you to product tax invoice, credit notes/debit notes, return filing and other related documents as mandated by Sales and Service Tax (SST) easily and accurately. The user-friendly, robust system delivers an automated, instant, and accurate tax management solution which your business can rely on.

Tax Adjustments

Review tax reports and enter the tax adjustment directly in either Sale or Purchase Tax Adjustment to update the specified tax liability account in the GL.

Flexible Tax Configuration

MySoft ERP pre-configured a set of SST Tax Codes which are used for making a tax return to the tax authorities. You have the ability to define new or edit the tax codes if tax legislation is changed.

Tax Return Report

Generate Tax Return Reports rapidly and accurately with the given taxable period.

Tax Return Reconciliation

Tax Return Reconciliation "flagged" on the generated tax amount and exclude from the future Tax Return Reports.

Tax Transactions Drill Down

Keeping an entire record of each tax transaction including the originating module and transaction, the taxable amount, tax, reference number, and document type. Allowing to drill down from tax reports for easy transaction viewing or document hyperlink by double click the voucher number.

Tax Code	Tax Description	Tax Rate	Category
CP10	Sales Tax 10%	10%	SST-Sales Tax 10
CP5	Sales Tax 5%	5%	SST-Sales Tax 5
CP6	Services Tax 6%	6%	SST-Service Tax 6
CPE	Service Tax Exempted	0%	SST-Service Exempted
CJE	Sales Tax Exempted	0%	SST-Sales Exempted
CNR	Not Relevant to SST	0%	SST-Not Relevant
CJE-DA	Export/Special Area/Designated Area	0%	SST-Designated Area
CJE-CP	SST Schedule A (Class of Person)	0%	SST-Schedule A
CJE-NTG	SST Schedule B (Manufacturer of Specific Non Taxable G...	0%	SST-Schedule B
CJE-RM	SST Schedule C (Item [1] and [2], Purchase / Importatio...	0%	SST-Raw Material Exempted
CJE-RMOB	SST Schedule C (Item [3] and [4], Purchase / Importatio...	0%	SST-Raw Material On Behalf Exempted
CJE-WPE	SST Schedule C (Item [5], Value of Work Performed Exe...	0%	SST-Work Performed Exempted
CP-DE	Services Tax Deduction	6%	SST-Service Tax Deduction
CJ-DE2	Sales Tax Deduction 2%	2%	SST-Sales Tax Deduction 2
CJ-DE4	Sales Tax Deduction 4%	4%	SST-Sales Tax Deduction 4

SST TAX CODES

SST Return History Quick View (Service Tax)

Voucher No	Taxable Period From	Taxable Period To	Return Due Date	Tax Payable	Authorized Person	Reconcile	Submitted	Status	Remark
SST00005	01/03/2019	30/04/2019	31/05/2019	7,691.15	Mr. Lam		<input type="checkbox"/>	READY RECON.	
SST00004	01/02/2019	28/02/2019	31/03/2019	165,059.65	Mr. Lam		<input checked="" type="checkbox"/>	COMPLETE	SST between 01/01/2019 and 28/02/2019
SST00003	01/11/2018	31/12/2018	31/01/2019	366,530.22	Mr. Lam		<input checked="" type="checkbox"/>	COMPLETE	SST between 01/11/2018 and 31/12/2018
SST00002	01/09/2018	31/10/2018	30/11/2018	8,243.96	Mr. Lam		<input checked="" type="checkbox"/>	COMPLETE	SST between 01/09/2018 and 31/10/2018

SST-02 RETURN

MYSOFT DEMO										
Detailed Tax Report								Print Date :	01/03/2019	
SST Voucher No []								Page :	1	
Tax Type [CP6] To [CP6]										
From Date [01/02/2019] To [29/02/2019]										
[Unreconcile Record]										
Date	Voucher No.	Reference No	Description	Amount	Amount(Base)	Tax	Tax(Base)	Gross Amount	Gross Amount (Base)	
Output Tax (Sales)										
CP6 Services Tax 6%										
21/02/2019	CN2019(02)00	CN2019(02)002	Ahmad Enterprise	-150,000.00	-150,000.00	-9,000.00	-9,000.00	-159,000.00 MYR*	1,0000	-159,000.00
21/02/2019	IN2019(02)005	IN2019(02)0058	C & C Advisory Sdn Bhd	12,000.00	12,000.00	720.00	720.00	12,720.00 MYR*	1,0000	12,720.00
21/02/2019	IN2019(02)005	IN2019(02)0058	Ali Corporation Sdn Bhd	911.00	911.00	54.66	54.66	965.66 MYR*	1,0000	965.66
Grand Total Of Output Tax					-137,089.00		-8,225.34			-145,314.34
					-137,089.00		-8,225.34			-145,314.34
					-137,089.00		-8,225.34			-145,314.34

DETAILED TAX REPORT

EXPORT REPORT IN VARIETIES FORMATS

MICROSOFT INTEGRATED

With the Microsoft Integration, MySoft ERP is supported you to export the reports in various Microsoft formats including Words and Excel Format. By using Microsoft Excel, it can synchronize the MySoft ERP's database perfectly and providing you further report customization and enhance available.

MYSOFT DEMO
 Chart Of Accounts
 Print Date: 06/08/2019
 Page: 1

Code	Name	Type	Balance
11000	Cash & Bank Balances	1. Current Assets	0.00
11100	Bank Guarantee	1. Current Assets	0.00
11200	Petty Cash	1. Current Assets	6,500.00
11300	Bank	1. Current Assets	0.00
11301	Fund In Transit	1. Current Assets	0.00
11302	Alliance Bank	3. Liability	0.00
11303	Ambank 1	1. Current Assets	0.00
11304	Ambank 2	1. Current Assets	33,162.27
11305	Ambank 3	1. Current Assets	0.00
11306	Ambank 4	1. Current Assets	0.00
11307	Ambank 5	1. Current Assets	0.00
11308	Ambank 6	1. Current Assets	0.00
11309	Ambank 7	1. Current Assets	0.00
11310	Ambank 8	1. Current Assets	0.00
11311	Ambank Islamic 1	1. Current Assets	0.00
11312	CIMB Bank 1	1. Current Assets	0.00
11313	CIMB Bank 2	1. Current Assets	0.00
11314	CIMB Bank 3	1. Current Assets	0.00
11315	CIMB Bank 4	1. Current Assets	0.00
11316	CIMB Bank 5	1. Current Assets	0.00
11317	CIMB Bank 6	1. Current Assets	0.00
11318	CIMB Bank 7	1. Current Assets	0.00
11319	CIMB Bank 8	1. Current Assets	0.00
11320	CIMB Bank 9	1. Current Assets	0.00
11321	CIMB Bank 10	1. Current Assets	0.00
11322	CIMB Bank 11	1. Current Assets	0.00
11323	CIMB Islamic 1	1. Current Assets	0.00
11324	CIMB Islamic 2	1. Current Assets	0.00
11325	CIMB Islamic 3	1. Current Assets	0.00
11326	CIMB Islamic 4	1. Current Assets	0.00
11327	CIMB Islamic 5	1. Current Assets	0.00
11328	CIMB Islamic 6	1. Current Assets	0.00
11329	CIMB Islamic 7	1. Current Assets	0.00
11330	CIMB Islamic 8	1. Current Assets	0.00
11331	Hong Leong Bank	1. Current Assets	0.00
11334	Public Bank	1. Current Assets	0.00
11335	Public Bank 1	1. Current Assets	0.00
11336	Public Bank 2	1. Current Assets	0.00

CRYSTAL REPORT

MYSOFT DEMO
 Chart Of Accounts
 Print Date: 06/08/2019
 Page: 1

Code	Name	Type	Balance
11000	Cash & Bank Balances	1. Current Assets	0.00
11100	Bank Guarantee	1. Current Assets	0.00
11200	Petty Cash	1. Current Assets	6,500.00
11300	Bank	1. Current Assets	0.00
11301	Fund In Transit	1. Current Assets	0.00
11302	Alliance Bank	3. Liability	0.00
11303	Ambank 1	1. Current Assets	0.00
11304	Ambank 2	1. Current Assets	33,162.27
11305	Ambank 3	1. Current Assets	0.00
11306	Ambank 4	1. Current Assets	0.00
11307	Ambank 5	1. Current Assets	0.00
11308	Ambank 6	1. Current Assets	0.00
11309	Ambank 7	1. Current Assets	0.00
11310	Ambank 8	1. Current Assets	0.00
11311	Ambank Islamic 1	1. Current Assets	0.00
11312	CIMB Bank 1	1. Current Assets	0.00
11313	CIMB Bank 2	1. Current Assets	0.00
11314	CIMB Bank 3	1. Current Assets	0.00
11315	CIMB Bank 4	1. Current Assets	0.00
11316	CIMB Bank 5	1. Current Assets	0.00

PDF

MICROSOFT EXCEL

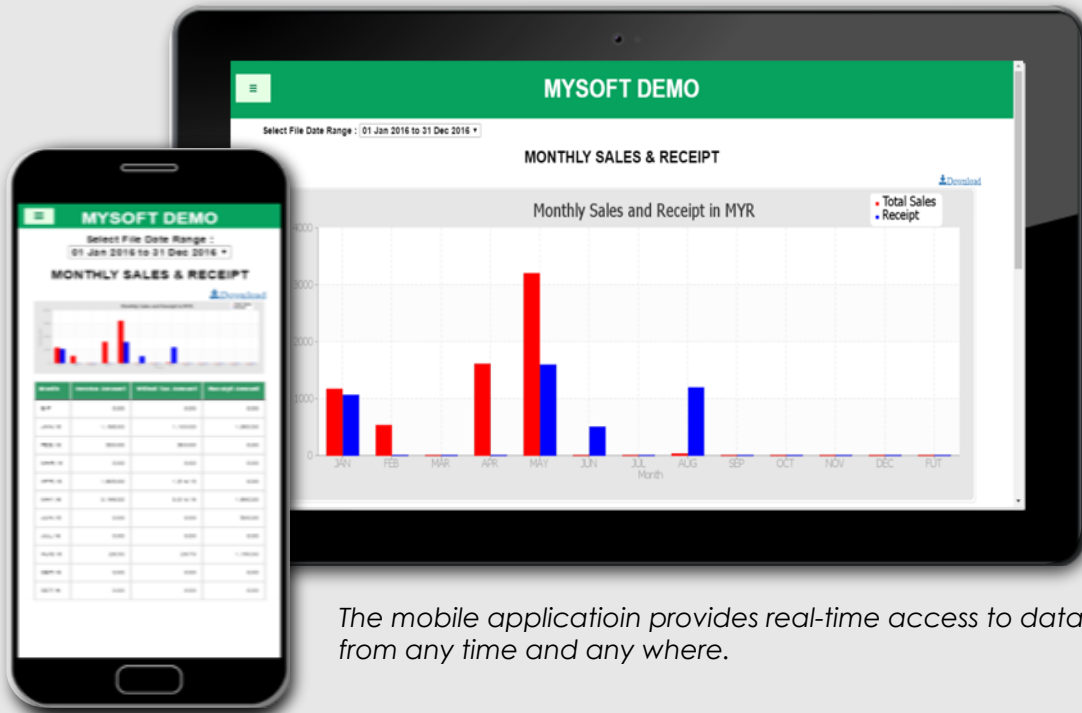
Column Labels	2015	2016	2017	2018	Grand Total
Sum of Amount	RM299,180.02	RM69,918.22	RM0.00	RM1,134,212.83	RM1,195,434.63
11100					
11200					
11300					
11301					
11302					
11303					
11304					
11305					
11306					
11307					
11308					
11309					
11310					
11311					
11312					
11313					
11314					
11315					
11316					

DATA SYNCHRONISE WITH MS EXCEL

Data Synchronise With Microsoft Excel - With the data synchronize with Microsoft Excel, you can now view the data externally without open MySoft ERP. You can further customize a unique reports layout best suit to your company and build visual charts is available.

MOBILITY SOLUTION

Utilizing the technology provided by smartphones and tablets to run business from any time and anywhere.



The mobile application provides real-time access to data from any time and any where.

KEY FEATURES

Easy Search

Search across your data and displaying your master and transactional data can be done from your mobile easily.

Access and Edit Customer and Supplier Data

Allowed to quick access and edit your customer or supplier data and view their respective daily transactional data away from office.

Mobile Sales App

Easy sales order taking through online and synchronize sales order back to MySoft ERP instantly.

Inventory Monitoring

Check current inventory level and access to stock detail information.

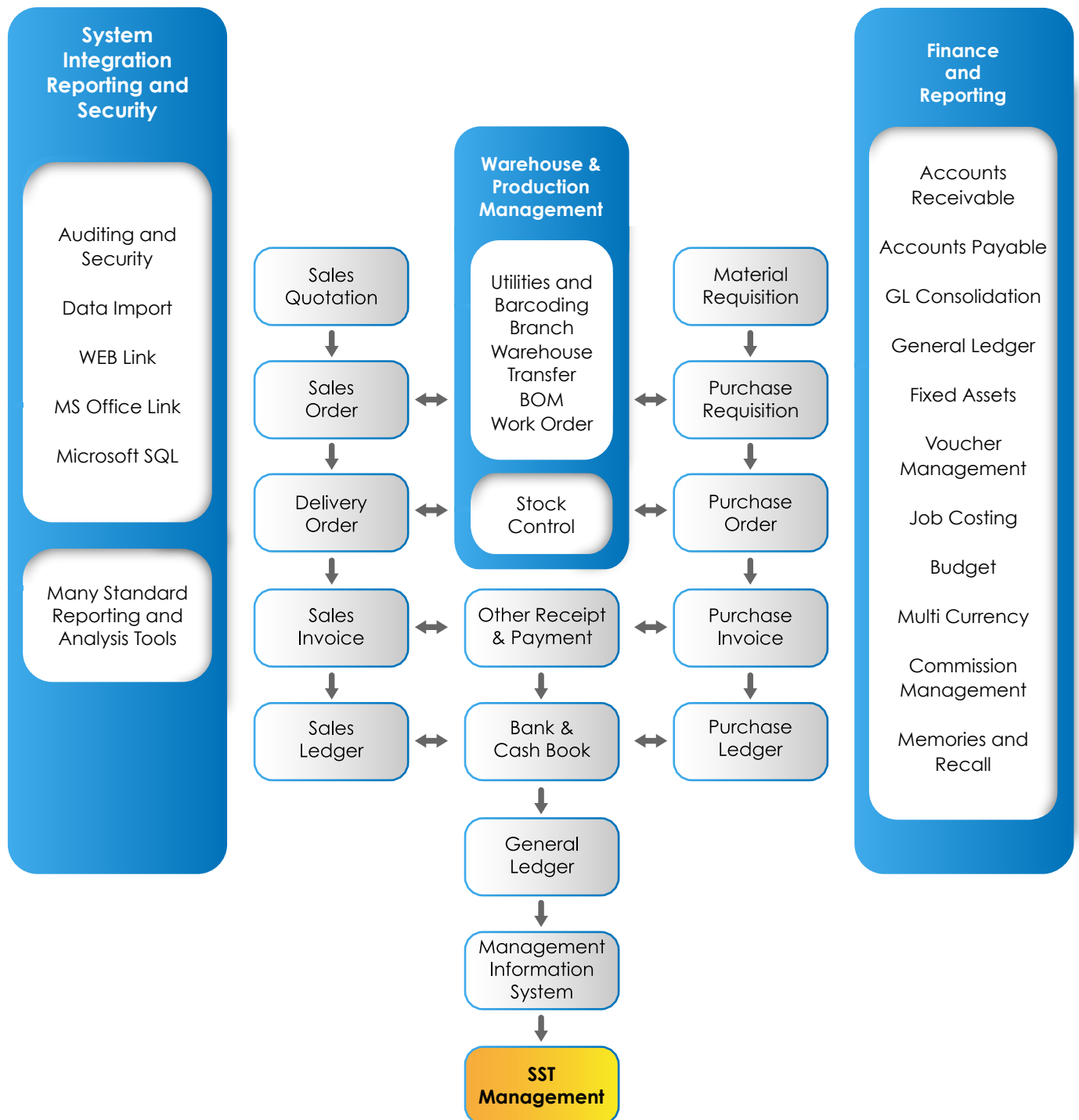
Warehouse Management

The easy stock management solutions to assist you for quick stock take process and good receive, pick or packing correct and quantity of item.

Alerts and Approvals

Process internal approval requests with mobile to help ensure quick and efficient business operations.

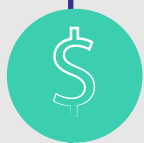
MYSOFT ERP PROCESS FLOW CHART



A COMPLETELY INTEGRATED BUSINESS MANAGEMENT SYSTEM

MySoft ERP seamlessly unifies information from your finance, distribution, manufacturing, service operations and SST management. It creates a wide-ranging business management system that covers every aspect of your business - from the initial customer order to after service, in the front and back office, on the shop floor and in the warehouse.

OUR CUSTOMER'S INDUSTRY



Trading

- Wisdom Power Sdn Bhd
- Home U (M) Sdn Bhd
- Hee Keong Enterprise Sdn Bhd



Manufacturing

- Hup Seng (M) Sdn Bhd
- Fuspim Sdn Bhd
- Kansai Paint Myanmar Co.Ltd



Non-Profit Organization

- Sedcovest Holdings Sdn Bhd
- MAICSA
- Masjid Teras Jernang



Hospitality

- USJ 9 Hotel Sdn Bhd
- Tasik Villa Holding Sdn Bhd
- P.P. Island Hotel Sdn Bhd



Education

- KH Asna Education Sdn Bhd
- Paragon Education Sdn Bhd
- Faiih Ad Deen Education Sdn Bhd



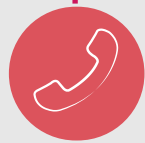
Medical

- Twin Towers Medical Centre KLCC Sdn Bhd
- Insan Bakti Sdn Bhd
- Dato Harnam Ent. Specialist Clinics Sdn Bhd



Retail

- Aras Mega (M) Sdn Bhd
- A-Look Eyewear Sdn Bhd
- Al-Ameen Serve Holdings Sdn Bhd



Telecommunication

- Telechat Communication Sdn Bhd
- Trisilco Radiance Communications Sdn Bhd
- ABC Telecomm Co. Ltd



Audit Firm

- Acorn Management Services Sdn Bhd
- Baker Tilly
- Marc Consulting



Automotive

- Lim Auto Tyre & Battery Services
- Speedway Auto Service Centre Sdn Bhd
- Syarikat Putra Putri Auto Sdn Bhd



Construction

- Progamatic Design Sdn Bhd
- Reg-MFE Formwork Technology Sdn Bhd
- Sonstar Engineering Works Sdn Bhd



Koperasi

- Koperasi Peserta Felcra Lambor Kanan Perak Berhad
- Koperasi Perumahan Kuala Lumpur Berhad
- Koperasi Kakitangan Sawit Kinabalu Sabah Berhad

Relational Database Management Systems (RDBMS) – Microsoft SQL

Microsoft SQL Server is an RDBMS, which supports a wide variety of transaction processing, business intelligence and analytics applications in corporate IT environments.

Advantages:

- Relational databases are well-documented and mature technologies, and RDBMS are sold and maintained by a number of established corporations.
- SQL standards are well-defined and commonly accepted.
- A large pool of qualified developers has experience with SQL and RDBMS.
- All RDBMS is ACID-compliant, meaning they satisfy the requirements of Atomicity, Consistency, Isolation, and Durability.
- Excellent Data Recovery Support feature that promotes data restoration and recovery. Through the use of log files, caching, and backups, Microsoft's product allows you to feel confident that disaster recovery options are plentiful.

OUR CUSTOMER'S REFERENCE

BAKER TILLY MALAYSIA

One of the Largest accounting and business advisory firms in Malaysia



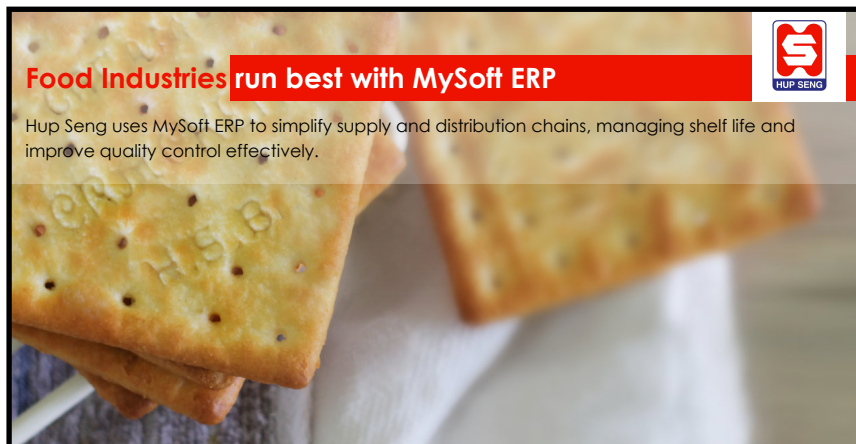
CENERGY SEA SDN BHD

Sustainable energy solutions company specializing in Reducing Carbon Footprint



HUP SENG INDUSTRIES BHD

One of the leading and established biscuit manufacturers in Malaysia



LTKM BERHAD

One of the leading chicken egg producers in Malaysia



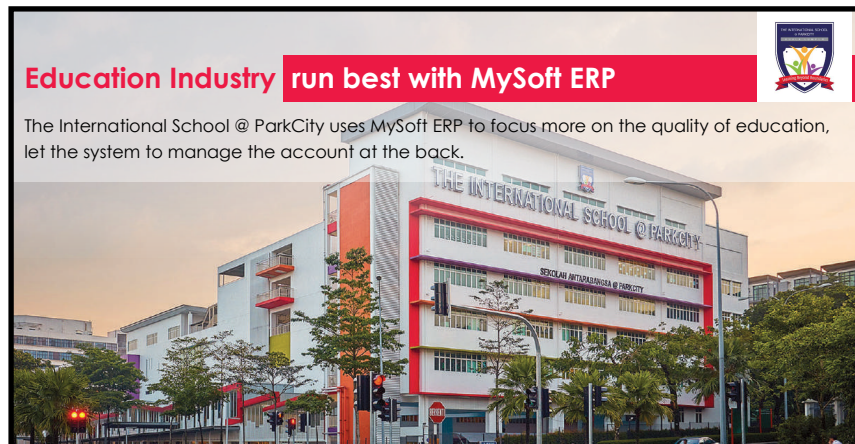
MFE FORMWORK TECHNOLOGY SDN BHD

Provide aluminium formwork solutions for a wide range of construction projects



THE INTERNATIONAL SCHOOL @ PARK CITY

Awarded the Outstanding International School Quality by (ISQM) at Gold Level



MYSOFT ERP

FEATURE LIST

MYSOFT ERP

- Unlimited year account keeping in one database
- Using Microsoft SQL Server Database
- System auto re-connect the disconnected database
- Support more than 500 concurrent user login
- Deploy on-premise or cloud
- Remote system access available
- Multi-Language
- 3rd-party software integration

FIXED ASSETS MANAGEMENT

- Fixed assets register & category
- Calculate fixed assets month-end depreciation
- Fixed assets disposal

FINANCIAL ACCOUNTING

- Chart of Account Maintains and with multiple levels
- GL Code grouping management account
- Budgetary control
- Financial Period Locking
- GL Journal Entry
- Bank Reconciliation with CSV Import (Auto Reconciliation)
- Departmental cost allocation by percentage
- Closing stock entry
- Recurring posting
- Multi-currency calculation
- Unrealized/realized gains and loss calculation
- Cashbook payment/receipt/transactions entry
- Contra Entry
- Console every department customer's aging
- Calculate profit by-products, departments or jobs
- Financial statement calculated in the periodic or perpetual method

ADDITIONAL FEATURES

- System auto generate Voucher Number
- System auto generate customer/ supplier/ stock code
- Additional customized fields
- Advance quick lookup toolbar based on keyword search
- Transactions memorise & recall functions

PURCHASE MANAGEMENT

- Purchase entry with stock
- Purchase order management / Material Requisition
- Compare goods receive with actual received quantity
- Backorder record
- Subcontractor management
- Supplier payment/refund matching
- Supplier payment history
- Supplier purchase history
- Batch posting and matching for supplier purchase/invoice and payment
- On hold supplier purchase invoice payment
- Multiple ships to
- Suggested supplier payment based on the due date
- Purchase price monitoring
- Purchase requisition approval before convert into Purchase Order
- Purchase Order pickup from Sales Order
- Calculate landed cost into selling prices
- 3-way purchase matching
- The system suggested an order for shortage stock

SALES MANAGEMENT

- Cash Sales Management
- Invoice Management
- Credit/Debit Note Management
- Customer refund/receipt matching
- Customer receipt history
- Batch matching for customer's sales and receipt
- Customer purchase history
- Invoice pick up from Sales Order/Delivery Order
- Sales quotation revision history
- Product's quantity allocation for Sales Order
- Console Sales Order & convert into Purchase Order
- Minimum sales price monitor
- Selling price change by category/product
- Marketing promotion period management
- Product/Customer special pricing
- Multi-discount level or Discount based on Quantity
- Mass pricing update
- Approval functions for Sales Order by Management
- Auto approval for Sales Order by user-defined conditions
- Partial order dispatch
- Inventory Matrix (Support different size & color)
- FOC Item
- Salesman view own sales region data only
- Branch manager view own sales team data only
- Unlimited customer pricing based on quantity & period
- Effective sales order placement with mobile sales
- Load all item followed by customer in Sales Order
- Salesman Commission

JOB & PRODUCTION MANAGEMENT

- Bill of materials management
- Works order process tracking
- Works in progress
- Stock assembly/disassembly planning
- Overhead cost calculation
- Work order documents for the production department
- Production & materials requirements planning
- Work breakdown structure management
- Finished goods costing calculation
- Compare estimates with actual to date, report variance

REPORTS

- Financial Report Standard (FRS) Reporting
- Crystal report customization
- Export reports to PDF/Excel/Words/Others
- Data Live-linked with Microsoft Excel

MASTER PROFILE SETTINGS

- Customer/Supplier master settings
- Multiple contact number details for Customer/Supplier
- Opening balance for Customer/Supplier
- Multiple delivery addresses
- Debtor Control & Sales Code attached to Customer
- Credit Control & Purchase Code attached with supplier

CREDIT CONTROL MANAGEMENT

- Auto credit terms/credit limit checking while issues sales documents
- Automated block sales documents issuance to the blocked account
- Automated overdue interest billing
- Business cash flow improvement by controlling customer's credit limit & credit terms
- Salesman commission calculation based on receipt
- Interest calculate for overdue invoices

SECURITY CONTROL

- Screen Lock protection
- System-wide security restrictions based on user-login
- PIN control protection
- Detail user audit log report
- Backup/Restore company data

EMAIL MODULE

- Delivering e-statement to customers with a single click send button
- Sending broadcast email
- Email delivering Sales Quotation, Sales Order, Invoice, Credit Note and Customer Receipt
- Internal approval for Purchase Requisition and Sales Order through web or systems.
- Purchase order acknowledge by Supplier via Online.

INVENTORY & WAREHOUSE MANAGEMENT

- Stock master settings
- The product expiration date for perishable goods
- Re-order point tracking
- Automated re-order management
- Replenishment warnings
- Sales/purchase GL code attached with stock
- Record tariff code number for stock
- Stock in/out management
- Stocktake
- Stocktake by using apps & external device
- Stock adjustment for a stock variance
- Stock loan units management
- Multiple warehouse location
- Lot & Bin Management
- Record customer's stock code
- Barcode management
- Batch & serial number control
- Return management
- Products warranty & replacement management
- Warehouse Transfer
- Periodical/Perpetual inventory costing
- Moving weighted average, standard average FIFO costing

TAX MANAGEMENT

- Tax module recognized by IRAS & RMCD
- Tax Type attached to Customer/Supplier
- Record Tax Number for Customer/Supplier
- Record Tax Exemption No. for Customer
- Tax Code for transactions
- Service tax type for transactions screen
- Sales/Purchase tax adjustment
- Instance calculate tax report
- Detailed tax report
- Service tax deduction adjustment
- Service tax for invoice due to more than 12 months



MySoft

MYSOFT CORPORATION SDN BHD

Suite 1-35, Block 4809, CBD Perdana 2, Jalan Persiaran Flora,
Cyber 12, 63000 Cyberjaya Selangor.

Email: sales@mysoft.com.my

Phone: +(60)3 8601 0698

Website: www.mysoft.com

Facebook: www.facebook.com/MysoftCorporation

Copyright © 2020 MySoft ERP Enterprise Resource Planning System

Copyright © MySoft Corporation. All rights reserved.

MySoft ERP mentioned herein is registered trademarks of MySoft Corporation.

All other marks are registered trademarks or trademarks of their respective companies.

The information included in this publication could include technical inaccuracies or typographical errors.